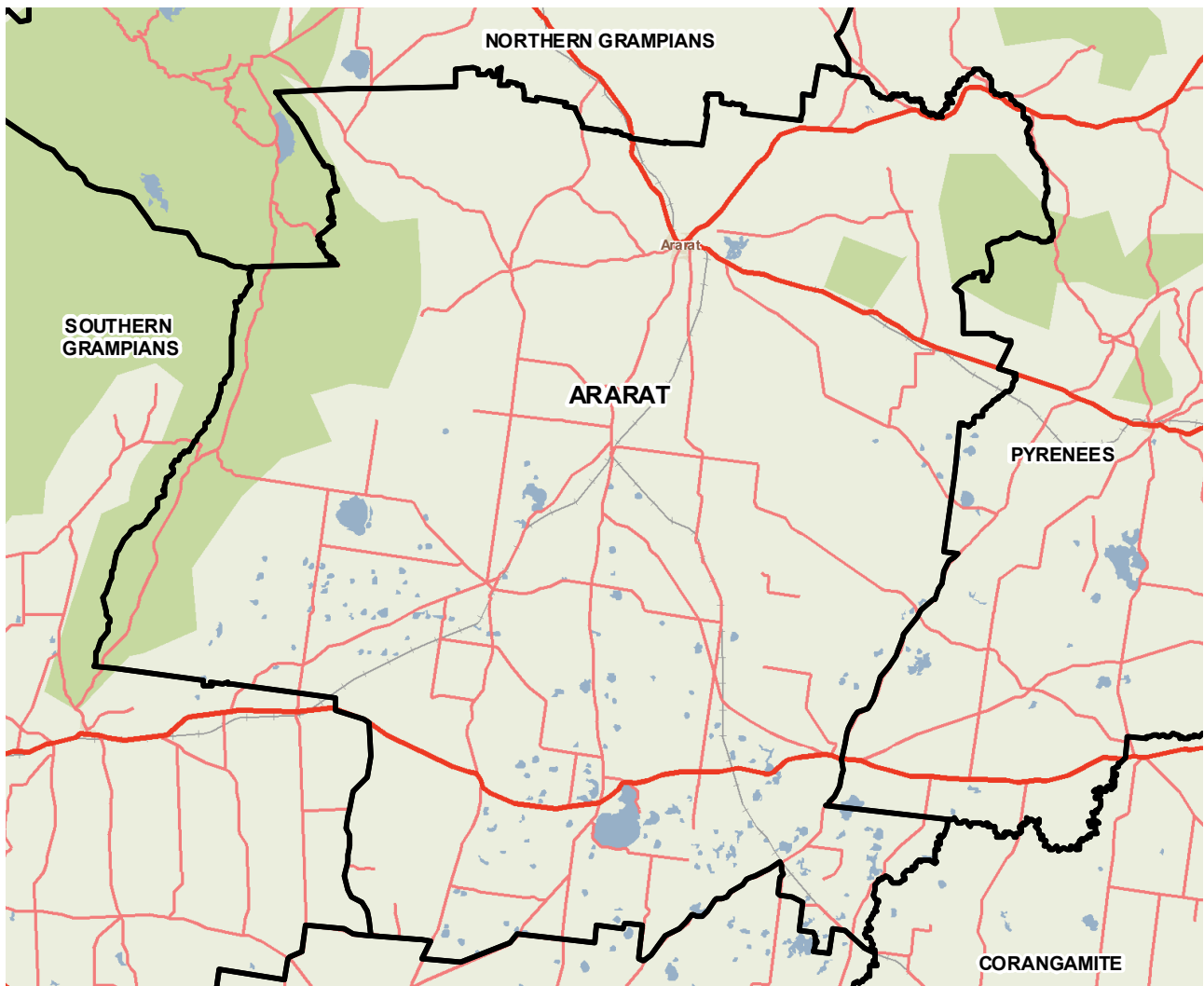


Ararat (RC)



Ararat Rural City is a versatile primary production area famous for its premium viticulture and wine industry, quality merino wool, and cropping and manufacturing industries. Ararat Rural City forms a gateway to important tourism destinations such as the Grampians Ranges, Pyrenees Ranges, Mt Langi Ghiran, Mt Cole and Lake Bolac. Ararat is the district retail hub. Ararat is located 200 km west of Melbourne on the Western Highway at the junction of several major highways. The three main industries of employment are agriculture, forestry and fishing, health care and social assistance, and manufacturing.

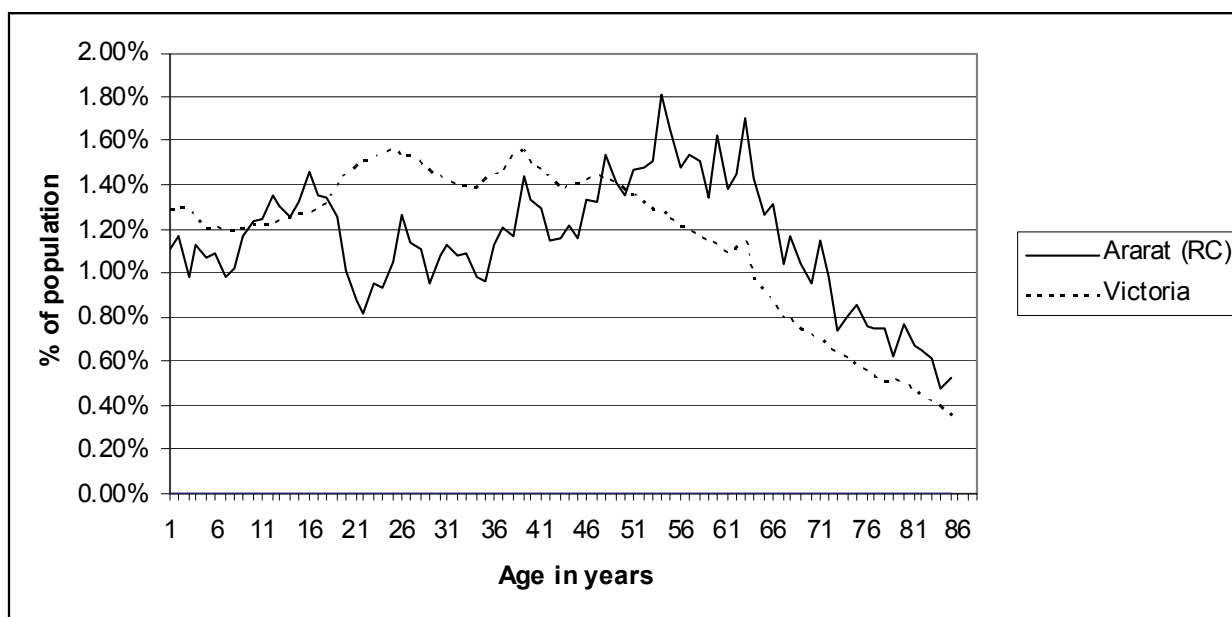


Geography

Metropolitan/rural	Rural		
Departmental region	Grampians		
Area of LGA	4,209.8 sq km		
ASGC LGA code	20260		
Most populous community in LGA	Ararat		
	Distance to Melbourne	197.5 km	
	Travel time to Melbourne	155 minutes	
ARIA remoteness category	Accessible		
ARIA measures (low/median/high)	1.5 / 2 / 2.7		
Business land use	<1%	Industrial land use	<1%
Residential land use	<1%	Rural land use	86.8%
Other land use	12.9%		

Population

2009 population profile



2009 population by age and sex

	Females	Males	Total	% total LGA	% total VIC
0-14	1,055	1,021	2,076	17.4%	18.5%
15-24	573	744	1,317	11.1%	14.3%
25-44	1,329	1,413	2,742	23.0%	29.0%
45-64	1,697	1,827	3,524	29.6%	24.6%
65-84	994	987	1,981	16.6%	11.8%
85+	191	82	273	2.3%	1.8%
Total	5,839	6,074	11,913	100.0%	100%

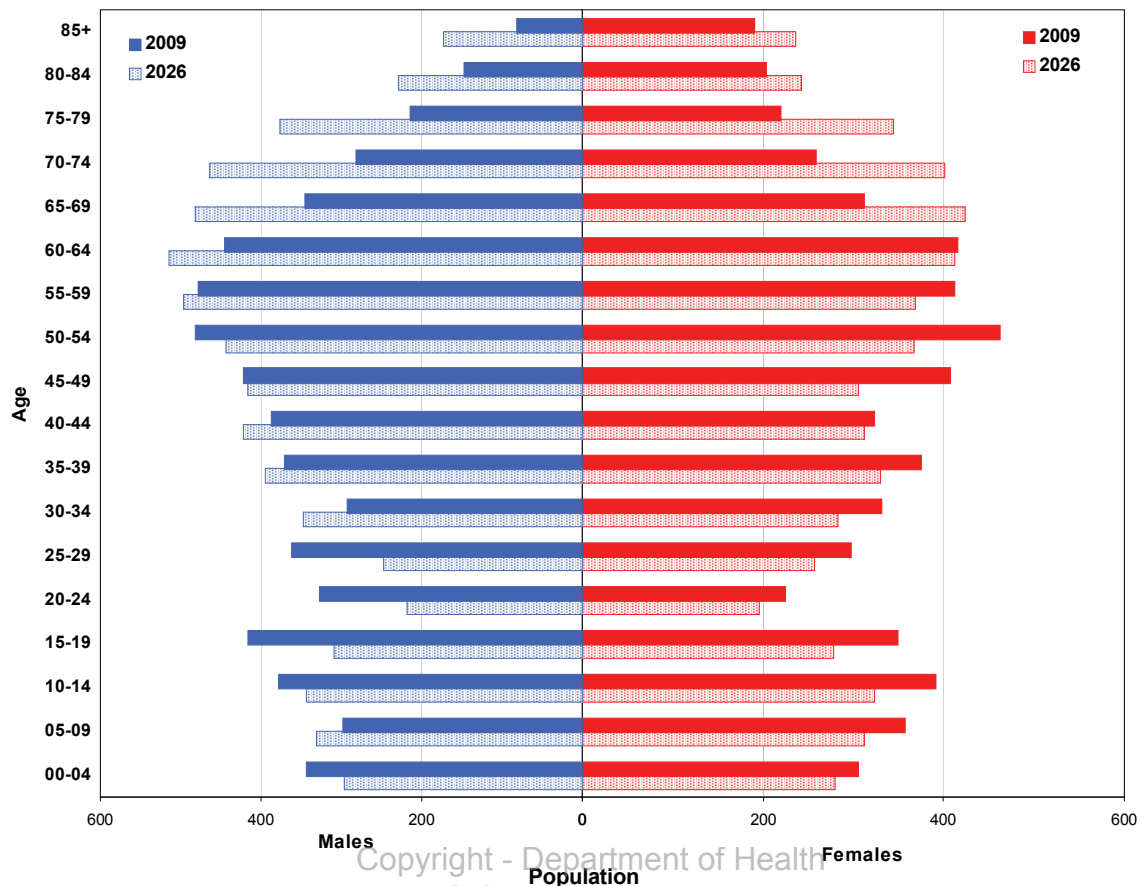
Aboriginal and Torres Strait Islander population

	LGA measure	Rank among LGAs	Victoria measure
Aboriginal and Torres Strait Islander population	0.75%	33	0.65%

Per annum population change

Time period	LGA	Victoria
1999-2009, actual change	0.14%	1.51%
2009-2019, projected change	0.10%	1.28%

Population projections by age group and sex, 2009 and 2026



Services and facilities

	LGA measure	Rank among LGAs	Victoria measure
Primary care partnership	Grampians Pyrenees PCP	n/a	n/a
Number of kindergartens	6	n/a	1,755
Number of schools	13	n/a	2,260
Persons receiving Disability Services support	229	44	72,298
Aged care places (high care) per 1,000 eligible pop.	27.4	69	41.3
Aged care places (low care) per 1,000 eligible pop.	58.9	9	46.0
Percentage of population near to public transport	53.4%	37	72.6%

Economic, housing and sustainability characteristics

	LGA measure	Rank among LGAs	Victoria measure
Percentage of individuals with income less than \$400 per week	51.4%	22	45.8%
Proportion who are female	60.4%	n/a	62.0%
Proportion who are male	39.6%	n/a	38.0%
Percentage of households with income less than \$650 per week	42.5%	16	30.6%
Percentage of households with housing costs greater than 40% of income	4.8%	71	9.0%
Percentage of rental housing that is affordable	89.8%	11	21.3%
Median house price	\$155,000	71	\$413,446
Median rent for three bedroom home	\$193	69	n/a
New dwellings approved per 1,000 population	4.4	66	10.3
Social housing as a percentage of total dwellings	3.7%	40	4.3%
Number of social housing dwellings	164	n/a	80,955
Percentage of households with no motor vehicle	8.6%	24	9.3%
Passenger vehicles per 1,000 population	529	75	581
Percentage motor vehicles more than ten years old	56.1%	13	46.2%
Household recycling diversion rate	26.1%	70	39.8%
Household garbage yield (kg/year)	499.9	28	467.8

Health status

	LGA measure	Rank among LGAs	Victoria measure
Male disability-adjusted life years per 1,000 pop.	158.6	7	143.0
Female disability-adjusted life years per 1,000 pop.	140.4	4	129.1
Male life expectancy	76.8	74	80.3
Female life expectancy	82.0	77	84.4
Percentage persons reporting fair or poor health status	21.2%	14	18.3%
Percentage of females reporting fair or poor health status	17.6%	34	17.5%
Percentage of males reporting fair or poor health status	22.0%	20	19.2%
Percentage of persons 18+ who are current smokers	20.9%	28	19.1%
Percentage of females 18+ who are current smokers	23.6%	9	16.9%
Percentage of males 18+ who are current smokers	17.1%	59	21.4%
Percentage of persons at risk of short-term harm from alcohol consumption	10.0%	55	10.2%
Percentage of persons overweight or obese	59.2%	6	48.6%
Percentage of females overweight or obese	50.2%	10	40.3%
Percentage of males overweight or obese	62.7%	26	57.2%
Percentage of persons reporting a high/very high degree of psychological distress	9.9%	58	11.4%
Percentage of persons reporting asthma	9.7%	53	10.7%
Percentage of persons reporting type 2 diabetes	4.8%	32	4.8%
Percentage of persons who do not meet fruit and vegetable dietary guidelines	57.6%	2	48.2%
Percentage of females who do not meet fruit and vegetable dietary guidelines	52.3%	3	41.9%
Percentage of males who do not meet fruit and vegetable dietary guidelines	55.5%	43	54.8%
Percentage of persons who do not meet physical activity guidelines	28.2%	28	27.4%
Percentage of females who do not meet physical activity guidelines	29.9%	16	27.2%
Percentage of males who do not meet physical activity guidelines	26.0%	38	27.5%

Health services and utilisation

	LGA measure	Rank among LGAs	Victoria measure
Hospital inpatient separations per 1,000 population	465.2	18	422.0
Main public hospital attended	East Grampians Health Service [Ararat]	n/a	n/a
Separations from most frequently attended public hospital	48.8%	n/a	n/a
Self-sufficiency	61.4%	20	n/a
Average length of stay (multi day stays), public hospital inpatients (days)	6.4	20	5.9
Per annum change in hospital inpatient separations, 1999-2000 to 2009-10	4.2%	26	4.1%
Projected per annum change in separations, 2009-10 to 2018-19	1.8%	68	3.7%
Emergency department presentations per 1,000 pop.	61.2	75	249.9
Primary care type presentation to emergency, per 1,000 population	22.7	74	115.6
General practitioners per 1,000 population	0.79	63	1.03
Asthma admission rate ratio	0.96	44	1.0
Diabetes complications admission rate ratio	1.03	36	1.0
Drug and alcohol clients per 1,000 population	7.0	23	5.3
Registered mental health clients per 1,000 population	18.2	9	11.0
Primary health occasions of service per 1,000 pop.	600.3	9	163.7

Aged and disability characteristics

	LGA measure	Rank among LGAs	Victoria measure
Percentage with core activity need for assistance	6.4%	6	4.5%
Percentage of persons aged 75+ who live alone	3.3%	17	2.2%
Proportion who are female	74.9%	n/a	75.1%
Proportion who are male	25.1%	n/a	24.9%
HACC clients aged 0-69 per 1,000 target population	984.2	2	257.3
HACC clients aged 70 and over per 1,000 target population	443.8	25	368.3

Cultural diversity

	LGA measure	Rank among LGAs	Victoria measure
Percentage born overseas	7.3%	64	25.5%
Percentage speaking language other than English	2.0%	67	21.6%
Percentage with low English proficiency	0.3%	62	4.0%
New settler arrivals per 100,000 population	117.5	44	527.3
Humanitarian arrivals as a percentage of new settlers	0.0%	n/a	12.5%

Social capital

	LGA measure	Rank among LGAs	Victoria measure
Index of Relative Socio-Economic Disadvantage	956.3	11	n/a
Percentage of households with internet connected	49.9%	61	61.0%
Gaming machine losses per head of adult population	\$506.3	36	\$646.6
Family incidents per 1,000 population	9.1	15	6.6
Drug usage and possession offences per 1,000 pop.	3.5	11	1.9
Total offences per 1,000 population	70.6	24	67.2
Percentage who help out as a volunteer	33.3%	15	19.7%
Quality of life index rank	n/a	38	n/a

Education and employment characteristics

	LGA measure	Rank among LGAs	Victoria measure
Unemployment rate	7.5%	11	5.5%
Full-time equivalent students	1,970	n/a	853,111
Percentage who did not complete year 12	69.0%	19	51.3%
Percentage completed higher education qualification	25.0%	68	43.2%
Percentage of students attending government school	74.9%	20	63.7%

Child and family characteristics

	LGA measure	Rank among LGAs	Victoria measure
Total fertility rate	2.29	11	1.80
Percentage of families headed by one parent	13.6%	47	15.4%
Proportion who are female	61.4%	n/a	60.8%
Proportion who are male	38.6%	n/a	39.2%
Percentage of infants fully breastfed at three months	54.3%	39	51.4%
Percentage of children fully immunised at 24-27 months	97.6%	10	93.0%
Percentage of families with children in households with income less than \$650 per week	24.2%	16	17.9%