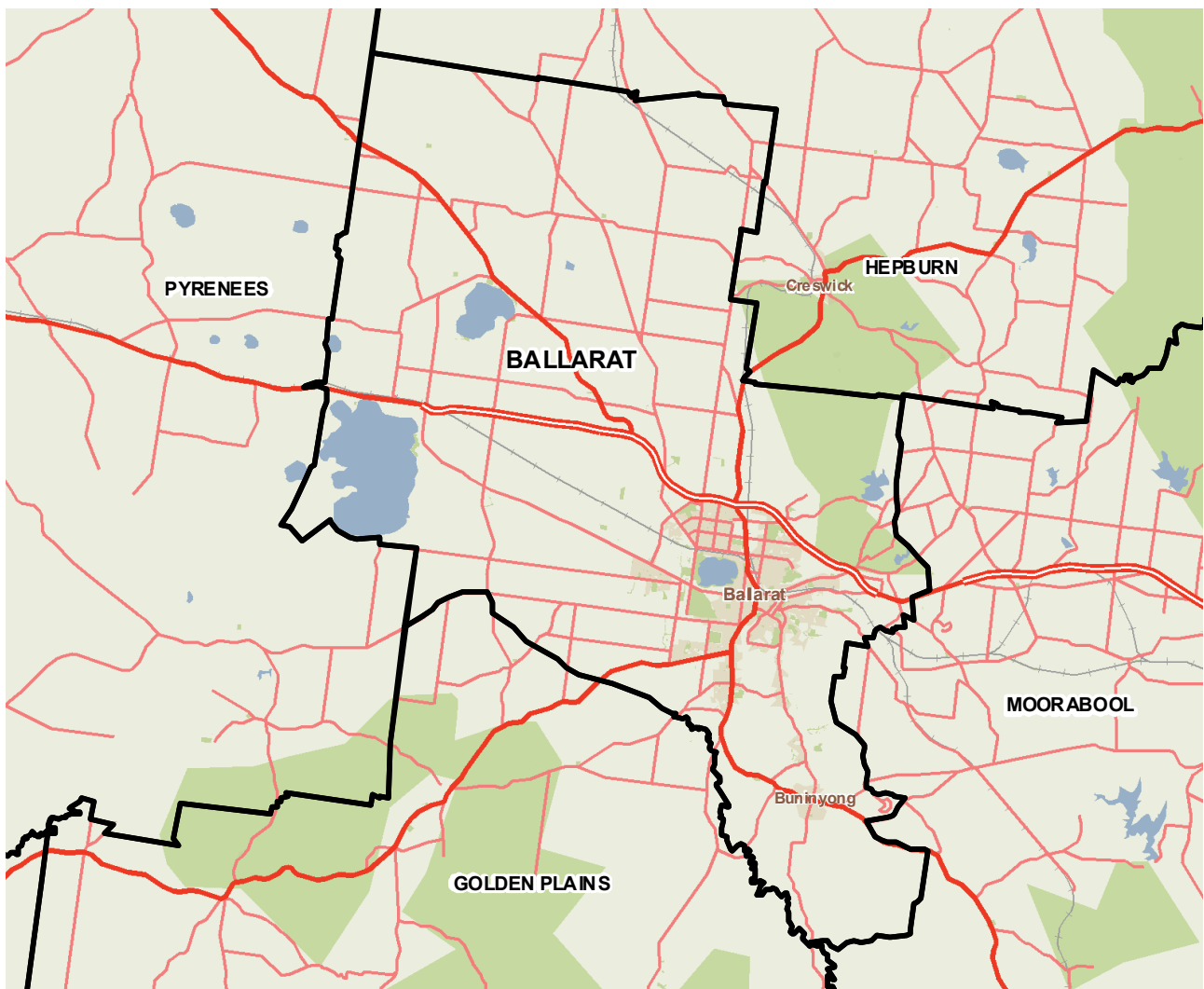


Ballarat (C)



The City of Ballarat lies within a gently undulating section of the midland plains in western Victoria, about 80 km from Melbourne. It is positioned at the centre of some of Victoria's most important freight, tourist and commuter transport routes, with the Western, the Midland, the Glenelg and the Sunraysia highways radiating from it. Ballarat has traditionally prospered on mineral and agricultural based resources, however manufacturing, tourism, health and community services, education and retailing are now the key industries. These industries, along with banking, finance and government services, are strengthening Ballarat's role as a regional service provider. The three main industries of employment are health care and social assistance, manufacturing, and retail trade.



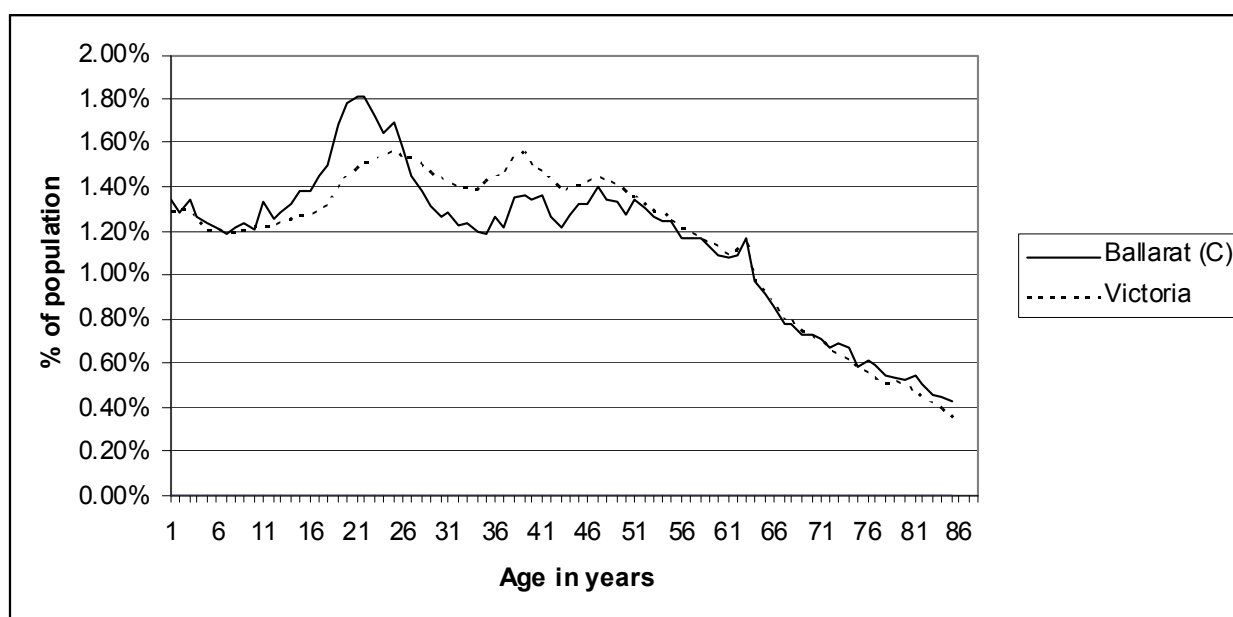
Copyright - Department of Health
Modelling, GIS and Planning Products Unit
spatial@health.vic.gov.au

Geography

Metropolitan/rural	Rural		
Departmental region	Grampians		
Area of LGA	739.9 sq km		
ASGC LGA code	20570		
Most populous community in LGA	Ballarat		
Distance to Melbourne	110.5 km		
Travel time to Melbourne	87 minutes		
ARIA remoteness category	Highly Accessible		
ARIA measures (low/median/high)	0.3 / 0.5 / 1.1		
Business land use	<1%	Industrial land use	1.4%
Residential land use	8.0%	Rural land use	73.7%
Other land use	16.6%		

Population

2009 population profile



2009 population by age and sex

	Females	Males	Total	% total LGA	% total VIC
0-14	8,865	9,099	17,964	19.1%	18.5%
15-24	7,550	7,940	15,490	16.5%	14.3%
25-44	12,539	12,008	24,547	26.1%	29.0%
45-64	11,700	10,910	22,610	24.0%	24.6%
65-84	6,543	5,118	11,661	12.4%	11.8%
85+	1,245	571	1,816	1.9%	1.8%
Total	48,442	45,646	94,088	100.0%	100%

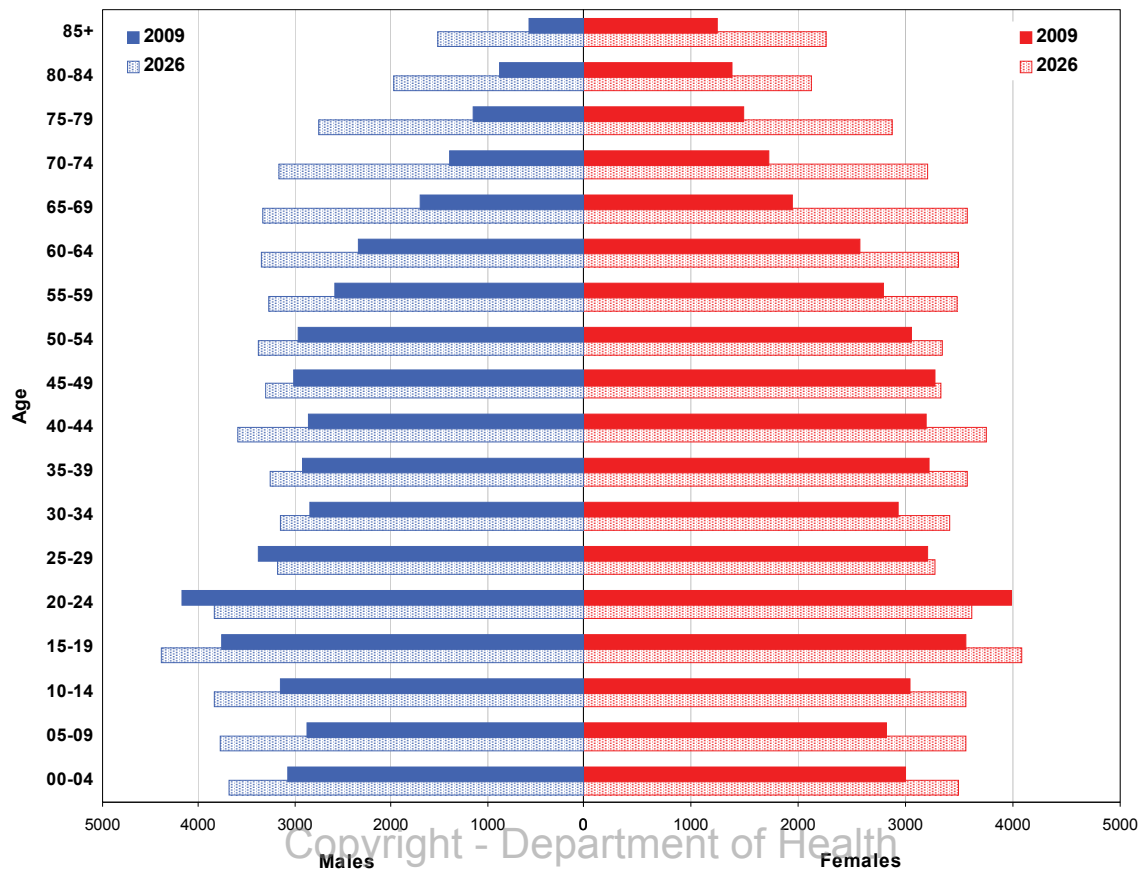
Aboriginal and Torres Strait Islander population

	LGA measure	Rank among LGAs	Victoria measure
Aboriginal and Torres Strait Islander population	1.06%	18	0.65%

Per annum population change

Time period	LGA	Victoria
1999-2009, actual change	1.46%	1.51%
2009-2019, projected change	1.41%	1.28%

Population projections by age group and sex, 2009 and 2026



Services and facilities

	LGA measure	Rank among LGAs	Victoria measure
Primary care partnership	Central Highlands PCP	n/a	n/a
Number of kindergartens	30	n/a	1,755
Number of schools	48	n/a	2,260
Persons receiving Disability Services support	2,417	11	72,298
Aged care places (high care) per 1,000 eligible pop.	42.9	31	41.3
Aged care places (low care) per 1,000 eligible pop.	35.2	72	46.0
Percentage of population near to public transport	72.8%	27	72.6%

Economic, housing and sustainability characteristics

	LGA measure	Rank among LGAs	Victoria measure
Percentage of individuals with income less than \$400 per week	49.6%	32	45.8%
Proportion who are female	61.9%	n/a	62.0%
Proportion who are male	38.1%	n/a	38.0%
Percentage of households with income less than \$650 per week	37.0%	37	30.6%
Percentage of households with housing costs greater than 40% of income	8.1%	29	9.0%
Percentage of rental housing that is affordable	66.3%	35	21.3%
Median house price	\$252,000	47	\$413,446
Median rent for three bedroom home	\$240	42	n/a
New dwellings approved per 1,000 population	12.4	16	10.3
Social housing as a percentage of total dwellings	6.7%	12	4.3%
Number of social housing dwellings	2308	n/a	80,955
Percentage of households with no motor vehicle	9.3%	15	9.3%
Passenger vehicles per 1,000 population	578	41	581
Percentage motor vehicles more than ten years old	50.7%	43	46.2%
Household recycling diversion rate	33.1%	52	39.8%
Household garbage yield (kg/year)	433.7	50	467.8

Health status

	LGA measure	Rank among LGAs	Victoria measure
Male disability-adjusted life years per 1,000 pop.	158.4	16	143.0
Female disability-adjusted life years per 1,000 pop.	140.0	14	129.1
Male life expectancy	77.7	63	80.3
Female life expectancy	82.7	73	84.4
Percentage persons reporting fair or poor health status	19.5%	24	18.3%
Percentage of females reporting fair or poor health status	17.4%	39	17.5%
Percentage of males reporting fair or poor health status	22.7%	14	19.2%
Percentage of persons 18+ who are current smokers	23.6%	11	19.1%
Percentage of females 18+ who are current smokers	22.7%	12	16.9%
Percentage of males 18+ who are current smokers	24.3%	18	21.4%
Percentage of persons at risk of short-term harm from alcohol consumption	11.5%	39	10.2%
Percentage of persons overweight or obese	50.0%	50	48.6%
Percentage of females overweight or obese	43.1%	49	40.3%
Percentage of males overweight or obese	55.8%	56	57.2%
Percentage of persons reporting a high/very high degree of psychological distress	13.5%	17	11.4%
Percentage of persons reporting asthma	15.4%	4	10.7%
Percentage of persons reporting type 2 diabetes	5.0%	27	4.8%
Percentage of persons who do not meet fruit and vegetable dietary guidelines	55.0%	8	48.2%
Percentage of females who do not meet fruit and vegetable dietary guidelines	51.4%	6	41.9%
Percentage of males who do not meet fruit and vegetable dietary guidelines	59.4%	22	54.8%
Percentage of persons who do not meet physical activity guidelines	24.4%	51	27.4%
Percentage of females who do not meet physical activity guidelines	27.7%	30	27.2%
Percentage of males who do not meet physical activity guidelines	21.5%	57	27.5%

Health services and utilisation

	LGA measure	Rank among LGAs	Victoria measure
Hospital inpatient separations per 1,000 population	436.0	33	422.0
Main public hospital attended	Ballarat Health Services [Base Campus]	n/a	n/a
Separations from most frequently attended public hospital	52.4%	n/a	n/a
Self-sufficiency	86.4%	7	n/a
Average length of stay (multi day stays), public hospital inpatients (days)	6.9	8	5.9
Per annum change in hospital inpatient separations, 1999-2000 to 2009-10	8.9%	2	4.1%
Projected per annum change in separations, 2009-10 to 2018-19	4.1%	16	3.7%
Emergency department presentations per 1,000 pop.	398.8	8	249.9
Primary care type presentation to emergency, per 1,000 population	262.2	7	115.6
General practitioners per 1,000 population	1.02	31	1.03
Asthma admission rate ratio	1.04	32	1.0
Diabetes complications admission rate ratio	1.04	32	1.0
Drug and alcohol clients per 1,000 population	6.3	29	5.3
Registered mental health clients per 1,000 population	17.0	13	11.0
Primary health occasions of service per 1,000 pop.	133.6	52	163.7

Aged and disability characteristics

	LGA measure	Rank among LGAs	Victoria measure
Percentage with core activity need for assistance	5.4%	26	4.5%
Percentage of persons aged 75+ who live alone	2.9%	33	2.2%
Proportion who are female	79.3%	n/a	75.1%
Proportion who are male	20.7%	n/a	24.9%
HACC clients aged 0-69 per 1,000 target population	349.6	24	257.3
HACC clients aged 70 and over per 1,000 target population	426.4	32	368.3

Cultural diversity

	LGA measure	Rank among LGAs	Victoria measure
Percentage born overseas	8.3%	59	25.5%
Percentage speaking language other than English	3.4%	47	21.6%
Percentage with low English proficiency	0.5%	42	4.0%
New settler arrivals per 100,000 population	172.2	35	527.3
Humanitarian arrivals as a percentage of new settlers	6.2%	26	12.5%

Social capital

	LGA measure	Rank among LGAs	Victoria measure
Index of Relative Socio-Economic Disadvantage	982.7	32	n/a
Percentage of households with internet connected	54.5%	45	61.0%
Gaming machine losses per head of adult population	\$761.0	13	\$646.6
Family incidents per 1,000 population	9.6	12	6.6
Drug usage and possession offences per 1,000 pop.	1.2	54	1.9
Total offences per 1,000 population	99.3	4	67.2
Percentage who help out as a volunteer	23.3%	42	19.7%
Quality of life index rank	n/a	54	n/a

Education and employment characteristics

	LGA measure	Rank among LGAs	Victoria measure
Unemployment rate	8.0%	7	5.5%
Full-time equivalent students	18,669	n/a	853,111
Percentage who did not complete year 12	59.5%	47	51.3%
Percentage completed higher education qualification	36.8%	22	43.2%
Percentage of students attending government school	59.5%	66	63.7%

Child and family characteristics

	LGA measure	Rank among LGAs	Victoria measure
Total fertility rate	1.97	55	1.80
Percentage of families headed by one parent	18.6%	6	15.4%
Proportion who are female	61.7%	n/a	60.8%
Proportion who are male	38.3%	n/a	39.2%
Percentage of infants fully breastfed at three months	46.7%	63	51.4%
Percentage of children fully immunised at 24-27 months	94.2%	30	93.0%
Percentage of families with children in households with income less than \$650 per week	21.8%	32	17.9%