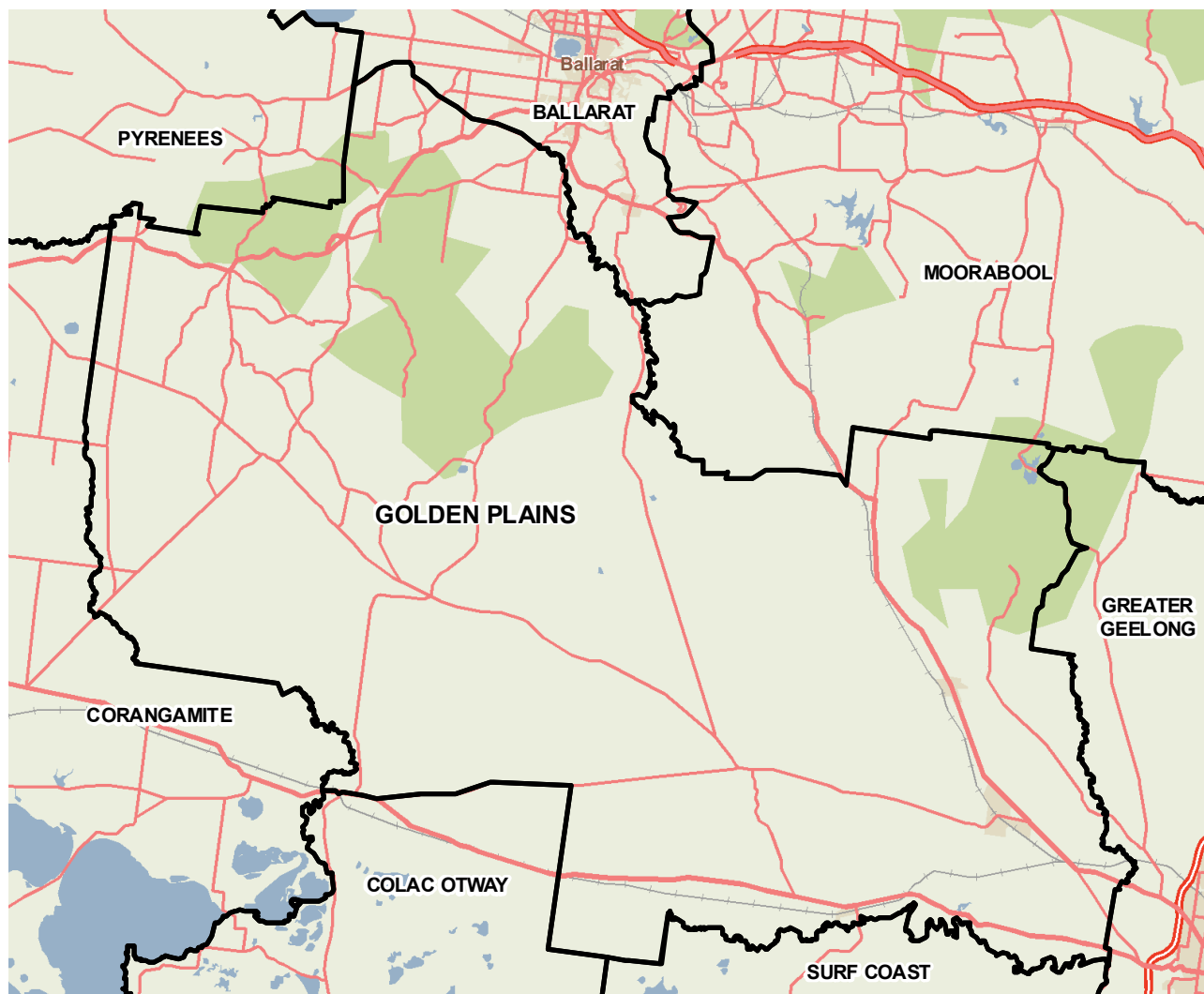


Golden Plains (S)



The Golden Plains Shire is predominantly rural, with a number of small townships servicing local communities between Ballarat and Geelong. The shire is one of the fastest growing municipalities in regional Victoria, with a growth rate of approximately 2.5 per cent per annum. Many Golden Plains residents work in Ballarat or Geelong. The shire's economic base is provided through agriculture, retailing and tourism, while home-based business is the largest employer. Agriculture is responsible for \$44 million worth of output annually. The three main industries of employment are health care and social assistance, manufacturing, and retail trade.



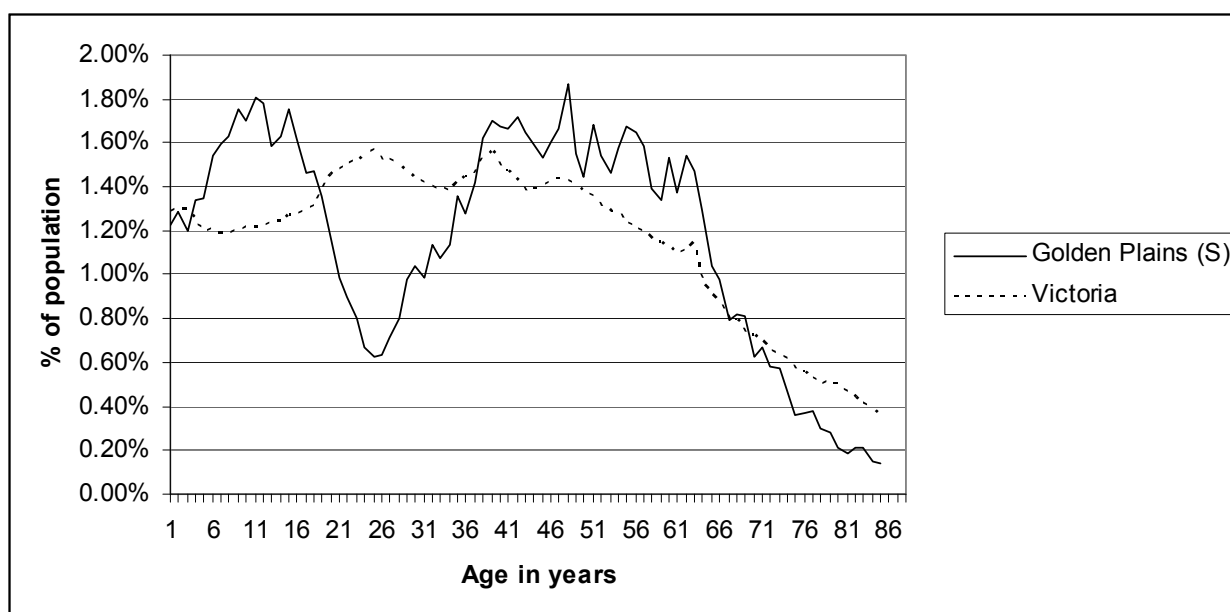
Copyright - Department of Health
Modelling, GIS and Planning Products Unit
spatial@health.vic.gov.au

Geography

Metropolitan/rural	Rural		
Departmental region	Grampians		
Area of LGA	2,703.5 sq km		
ASGC LGA code	22490		
Most populous community in LGA	Bannockburn		
Distance to Melbourne	86.3 km		
Travel time to Melbourne	69 minutes		
ARIA remoteness category	Highly Accessible		
ARIA measures (low/median/high)	0.4 / 1 / 1.5		
Business land use	<1%	Industrial land use	<1%
Residential land use	2.0%	Rural land use	88.8%
Other land use	9.1%		

Population

2009 population profile



2009 population by age and sex

	Females	Males	Total	% total LGA	% total VIC
0-14	2,097	2,116	4,213	23.2%	18.5%
15-24	912	1,095	2,007	11.0%	14.3%
25-44	2,384	2,285	4,669	25.7%	29.0%
45-64	2,632	2,877	5,509	30.3%	24.6%
65-84	751	907	1,658	9.1%	11.8%
85+	52	65	117	0.6%	1.8%
Total	8,828	9,345	18,173	100.0%	100%

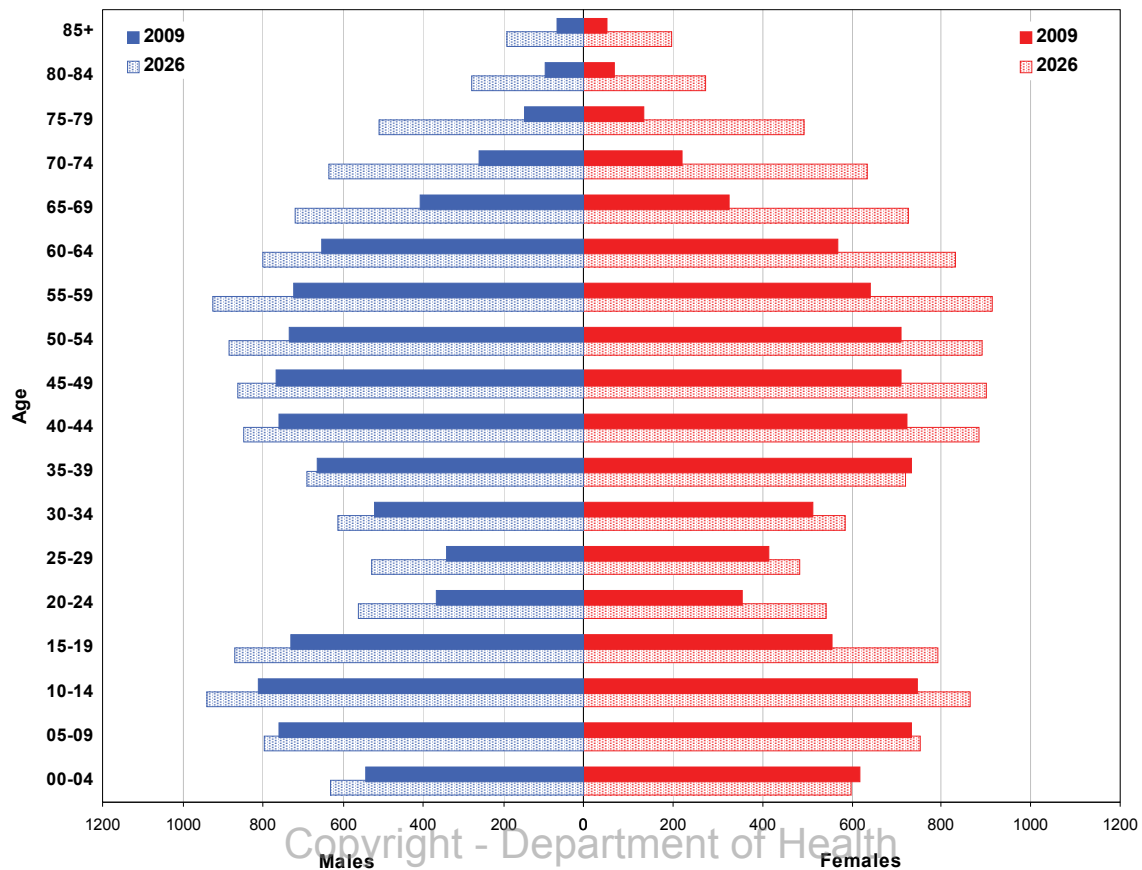
Aboriginal and Torres Strait Islander population

	LGA measure	Rank among LGAs	Victoria measure
Aboriginal and Torres Strait Islander population	0.60%	47	0.65%

Per annum population change

Time period	LGA	Victoria
1999-2009, actual change	2.48%	1.51%
2009-2019, projected change	1.87%	1.28%

Population projections by age group and sex, 2009 and 2026



Copyright - Department of Health
 Modelling, GIS and Planning Products Unit
 spatial@health.vic.gov.au

Services and facilities

	LGA measure	Rank among LGAs	Victoria measure
Primary care partnership	Central Highlands PCP	n/a	n/a
Number of kindergartens	8	n/a	1,755
Number of schools	12	n/a	2,260
Persons receiving Disability Services support	16	65	72,298
Aged care places (high care) per 1,000 eligible pop.	19.4	78	41.3
Aged care places (low care) per 1,000 eligible pop.	57.5	15	46.0
Percentage of population near to public transport	9.9%	77	72.6%

Economic, housing and sustainability characteristics

	LGA measure	Rank among LGAs	Victoria measure
Percentage of individuals with income less than \$400 per week	47.9%	45	45.8%
Proportion who are female	62.4%	n/a	62.0%
Proportion who are male	37.6%	n/a	38.0%
Percentage of households with income less than \$650 per week	27.9%	60	30.6%
Percentage of households with housing costs greater than 40% of income	6.2%	61	9.0%
Percentage of rental housing that is affordable	57.1%	39	21.3%
Median house price	\$252,260	46	\$413,446
Median rent for three bedroom home	\$240	42	n/a
New dwellings approved per 1,000 population	11.1	22	10.3
Social housing as a percentage of total dwellings	0.1%	79	4.3%
Number of social housing dwellings	3	n/a	80,955
Percentage of households with no motor vehicle	1.6%	79	9.3%
Passenger vehicles per 1,000 population	611	16	581
Percentage motor vehicles more than ten years old	55.5%	18	46.2%
Household recycling diversion rate	15.3%	79	39.8%
Household garbage yield (kg/year)	707.3	2	467.8

Health status

	LGA measure	Rank among LGAs	Victoria measure
Male disability-adjusted life years per 1,000 pop.	149.4	32	143.0
Female disability-adjusted life years per 1,000 pop.	130.3	35	129.1
Male life expectancy	80.9	11	80.3
Female life expectancy	85.0	13	84.4
Percentage persons reporting fair or poor health status	14.8%	67	18.3%
Percentage of females reporting fair or poor health status	11.8%	72	17.5%
Percentage of males reporting fair or poor health status	17.2%	51	19.2%
Percentage of persons 18+ who are current smokers	16.7%	63	19.1%
Percentage of females 18+ who are current smokers	10.3%	73	16.9%
Percentage of males 18+ who are current smokers	22.5%	33	21.4%
Percentage of persons at risk of short-term harm from alcohol consumption	10.4%	52	10.2%
Percentage of persons overweight or obese	49.2%	55	48.6%
Percentage of females overweight or obese	43.6%	47	40.3%
Percentage of males overweight or obese	53.8%	63	57.2%
Percentage of persons reporting a high/very high degree of psychological distress	10.4%	47	11.4%
Percentage of persons reporting asthma	14.1%	9	10.7%
Percentage of persons reporting type 2 diabetes	5.6%	17	4.8%
Percentage of persons who do not meet fruit and vegetable dietary guidelines	51.0%	28	48.2%
Percentage of females who do not meet fruit and vegetable dietary guidelines	41.6%	46	41.9%
Percentage of males who do not meet fruit and vegetable dietary guidelines	58.4%	27	54.8%
Percentage of persons who do not meet physical activity guidelines	21.6%	63	27.4%
Percentage of females who do not meet physical activity guidelines	21.4%	68	27.2%
Percentage of males who do not meet physical activity guidelines	21.0%	61	27.5%

Health services and utilisation

	LGA measure	Rank among LGAs	Victoria measure
Hospital inpatient separations per 1,000 population	378.4	63	422.0
Main public hospital attended	Geelong Hospital	n/a	n/a
Separations from most frequently attended public hospital	30.0%	n/a	n/a
Self-sufficiency	49.0%	36	n/a
Average length of stay (multi day stays), public hospital inpatients (days)	5.0	72	5.9
Per annum change in hospital inpatient separations, 1999-2000 to 2009-10	9.9%	1	4.1%
Projected per annum change in separations, 2009-10 to 2018-19	4.6%	9	3.7%
Emergency department presentations per 1,000 pop.	287.1	21	249.9
Primary care type presentation to emergency, per 1,000 population	167.0	16	115.6
General practitioners per 1,000 population	0.40	78	1.03
Asthma admission rate ratio	1.47	3	1.0
Diabetes complications admission rate ratio	0.82	58	1.0
Drug and alcohol clients per 1,000 population	2.9	72	5.3
Registered mental health clients per 1,000 population	9.9	59	11.0
Primary health occasions of service per 1,000 pop.	109.4	59	163.7

Aged and disability characteristics

	LGA measure	Rank among LGAs	Victoria measure
Percentage with core activity need for assistance	3.6%	69	4.5%
Percentage of persons aged 75+ who live alone	0.8%	74	2.2%
Proportion who are female	60.9%	n/a	75.1%
Proportion who are male	39.1%	n/a	24.9%
HACC clients aged 0-69 per 1,000 target population	402.8	21	257.3
HACC clients aged 70 and over per 1,000 target population	418.9	36	368.3

Cultural diversity

	LGA measure	Rank among LGAs	Victoria measure
Percentage born overseas	10.7%	46	25.5%
Percentage speaking language other than English	2.9%	53	21.6%
Percentage with low English proficiency	0.3%	56	4.0%
New settler arrivals per 100,000 population	77.0	60	527.3
Humanitarian arrivals as a percentage of new settlers	0.0%	n/a	12.5%

Social capital

	LGA measure	Rank among LGAs	Victoria measure
Index of Relative Socio-Economic Disadvantage	1,025.5	59	n/a
Percentage of households with internet connected	64.9%	19	61.0%
Gaming machine losses per head of adult population	n/a	n/a	\$646.6
Family incidents per 1,000 population	3.5	74	6.6
Drug usage and possession offences per 1,000 pop.	0.2	78	1.9
Total offences per 1,000 population	25.4	79	67.2
Percentage who help out as a volunteer	25.8%	38	19.7%
Quality of life index rank	n/a	7	n/a

Education and employment characteristics

	LGA measure	Rank among LGAs	Victoria measure
Unemployment rate	4.1%	61	5.5%
Full-time equivalent students	1,657	n/a	853,111
Percentage who did not complete year 12	66.2%	32	51.3%
Percentage completed higher education qualification	27.0%	53	43.2%
Percentage of students attending government school	70.1%	32	63.7%

Child and family characteristics

	LGA measure	Rank among LGAs	Victoria measure
Total fertility rate	2.20	23	1.80
Percentage of families headed by one parent	9.8%	78	15.4%
Proportion who are female	57.0%	n/a	60.8%
Proportion who are male	43.0%	n/a	39.2%
Percentage of infants fully breastfed at three months	50.7%	52	51.4%
Percentage of children fully immunised at 24-27 months	95.8%	18	93.0%
Percentage of families with children in households with income less than \$650 per week	15.4%	60	17.9%