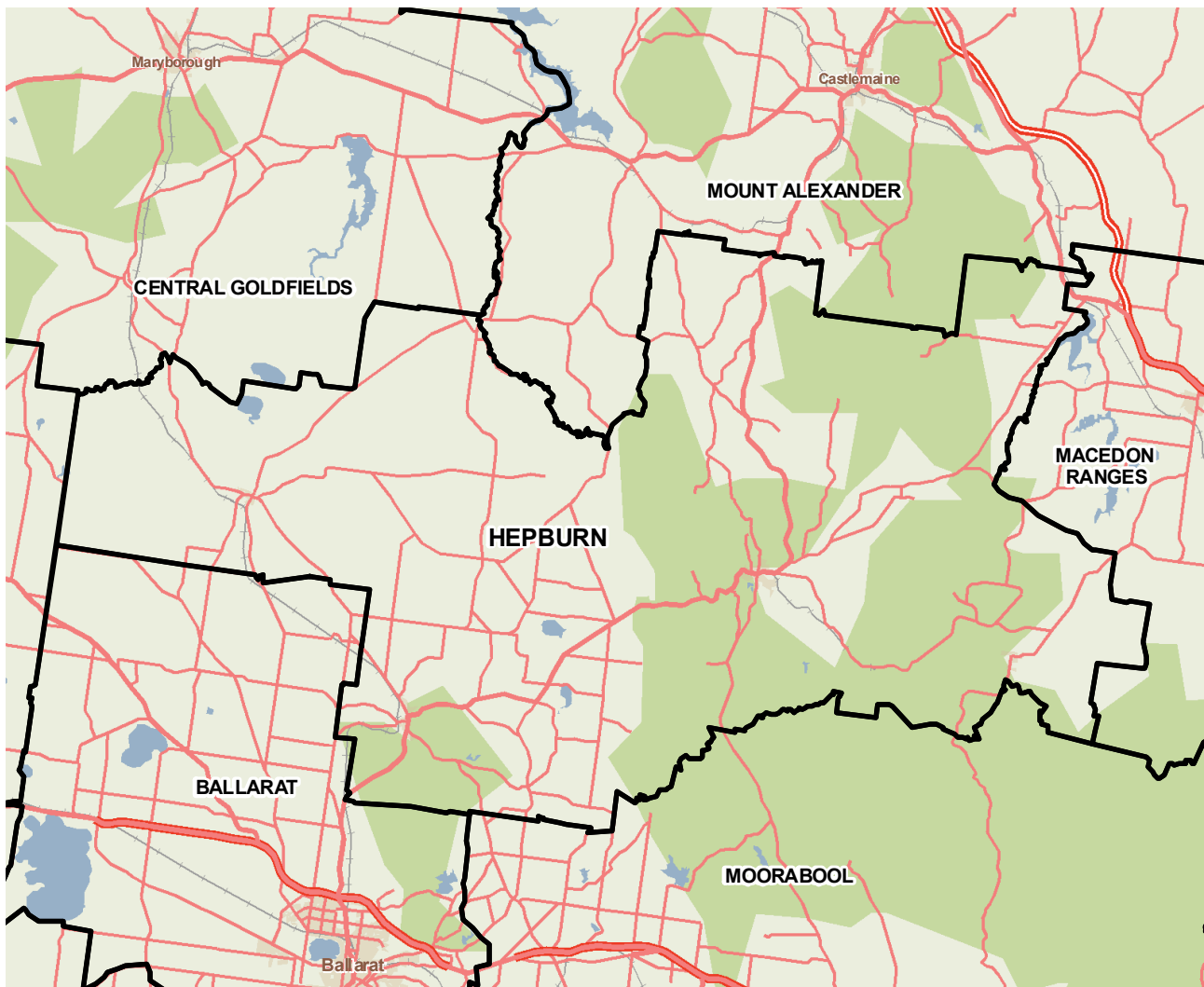


Hepburn (S)



Hepburn Shire is located in central Victoria, just over an hour from Melbourne. The region is renowned for its natural beauty and mineral springs. The eastern part of the Shire is hilly, with high rainfall and significant native forests. The west has medium to lower rainfall and broad acre farming land. The shire's economic base is in agriculture, forestry, manufacturing and tourism. Tourism is most popular around the Daylesford-Hepburn Springs mineral springs. Tourism, the arts, service industries, retailing, education and health and community services are growing rapidly. The three main industries of employment are health care and social assistance, manufacturing, and retail trade. On 23 February 2009 a bushfire started about four kilometres from Daylesford and burned about 2,300 hectares of land, destroying one house, 25 other structures, fencing, livestock and hardwood plantations.



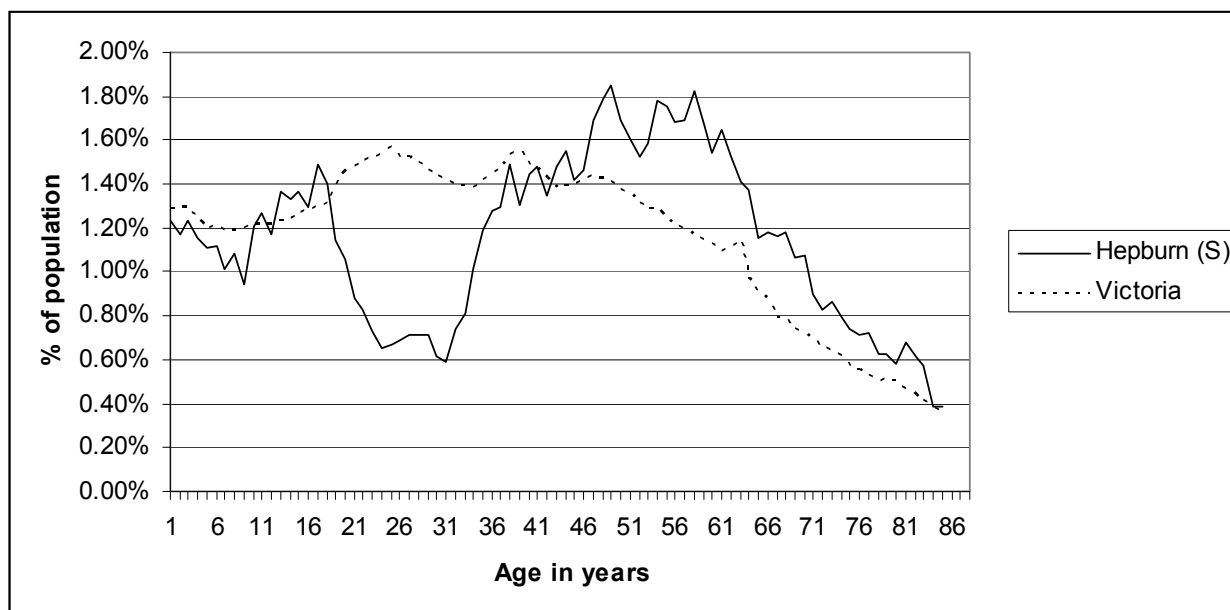
Copyright - Department of Health
Modelling, GIS and Planning Products Unit
spatial@health.vic.gov.au

Geography

Metropolitan/rural	Rural		
Departmental region	Grampians		
Area of LGA	1,470.2 sq km		
ASGC LGA code	22910		
Most populous community in LGA	Daylesford		
	Distance to Melbourne	108.4 km	
	Travel time to Melbourne	86 minutes	
ARIA remoteness category	Highly Accessible		
ARIA measures (low/median/high)	0.7 / 1.1 / 1.4		
Business land use	<1%	Industrial land use	<1%
Residential land use	2.3%	Rural land use	73.2%
Other land use	24.4%		

Population

2009 population profile



2009 population by age and sex

	Females	Males	Total	% total LGA	% total VIC
0-14	1,241	1,390	2,631	17.8%	18.5%
15-24	712	790	1,502	10.1%	14.3%
25-44	1,742	1,495	3,237	21.9%	29.0%
45-64	2,396	2,379	4,775	32.3%	24.6%
65-84	1,192	1,132	2,324	15.7%	11.8%
85+	209	125	334	2.3%	1.8%
Total	7,492	7,311	14,803	100.0%	100%

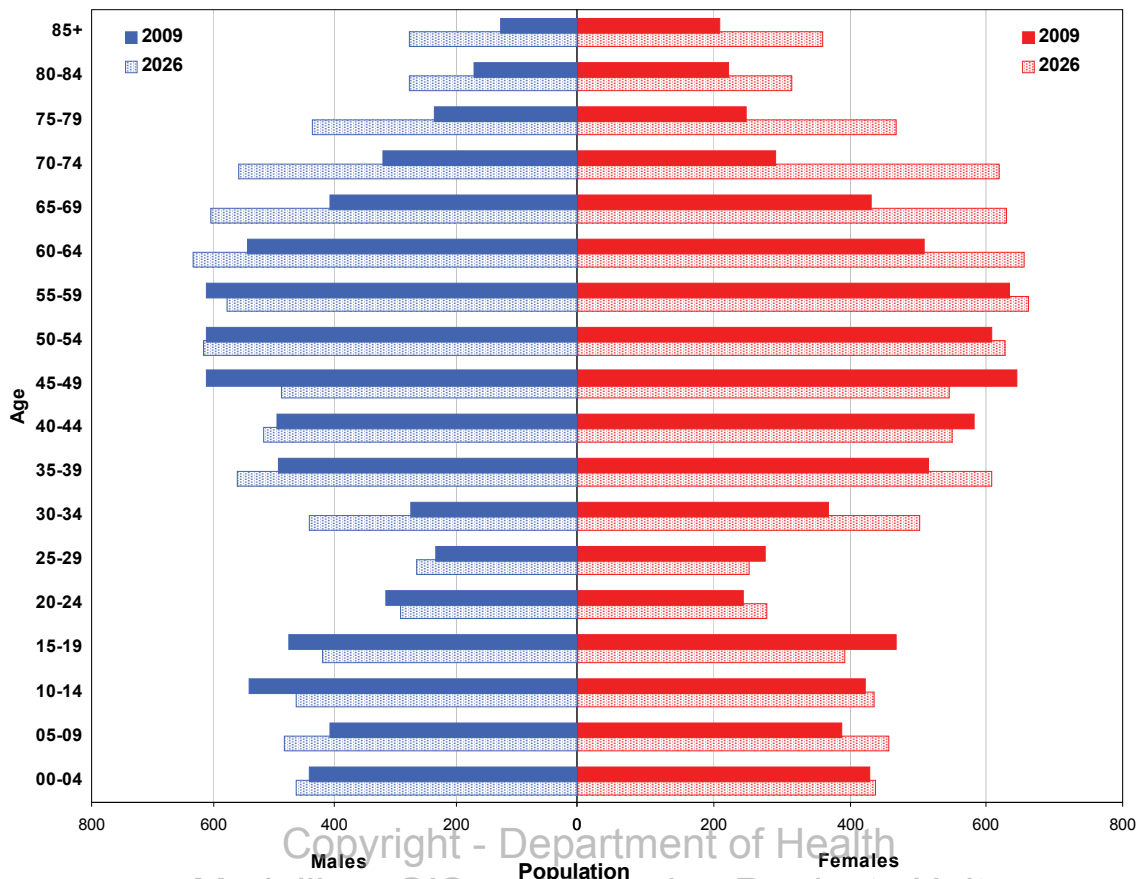
Aboriginal and Torres Strait Islander population

	LGA measure	Rank among LGAs	Victoria measure
Aboriginal and Torres Strait Islander population	0.67%	42	0.65%

Per annum population change

Time period	LGA	Victoria
1999-2009, actual change	0.44%	1.51%
2009-2019, projected change	0.87%	1.28%

Population projections by age group and sex, 2009 and 2026



Copyright - Department of Health
 Modelling, GIS and Planning Products Unit
 spatial@health.vic.gov.au

Services and facilities

	LGA measure	Rank among LGAs	Victoria measure
Primary care partnership	Central Highlands PCP	n/a	n/a
Number of kindergartens	6	n/a	1,755
Number of schools	15	n/a	2,260
Persons receiving Disability Services support	50	60	72,298
Aged care places (high care) per 1,000 eligible pop.	33.4	58	41.3
Aged care places (low care) per 1,000 eligible pop.	53.3	22	46.0
Percentage of population near to public transport	21.1%	62	72.6%

Economic, housing and sustainability characteristics

	LGA measure	Rank among LGAs	Victoria measure
Percentage of individuals with income less than \$400 per week	55.1%	10	45.8%
Proportion who are female	59.5%	n/a	62.0%
Proportion who are male	40.5%	n/a	38.0%
Percentage of households with income less than \$650 per week	44.9%	10	30.6%
Percentage of households with housing costs greater than 40% of income	8.2%	26	9.0%
Percentage of rental housing that is affordable	53.1%	43	21.3%
Median house price	\$325,000	32	\$413,446
Median rent for three bedroom home	\$250	36	n/a
New dwellings approved per 1,000 population	8.2	35	10.3
Social housing as a percentage of total dwellings	2.9%	48	4.3%
Number of social housing dwellings	163	n/a	80,955
Percentage of households with no motor vehicle	6.7%	44	9.3%
Passenger vehicles per 1,000 population	643	6	581
Percentage motor vehicles more than ten years old	59.6%	7	46.2%
Household recycling diversion rate	39.9%	31	39.8%
Household garbage yield (kg/year)	386.2	66	467.8

Health status

	LGA measure	Rank among LGAs	Victoria measure
Male disability-adjusted life years per 1,000 pop.	158.6	7	143.0
Female disability-adjusted life years per 1,000 pop.	140.4	4	129.1
Male life expectancy	79.4	30	80.3
Female life expectancy	82.0	78	84.4
Percentage persons reporting fair or poor health status	17.4%	43	18.3%
Percentage of females reporting fair or poor health status	18.3%	28	17.5%
Percentage of males reporting fair or poor health status	16.5%	57	19.2%
Percentage of persons 18+ who are current smokers	17.8%	55	19.1%
Percentage of females 18+ who are current smokers	20.6%	25	16.9%
Percentage of males 18+ who are current smokers	12.8%	77	21.4%
Percentage of persons at risk of short-term harm from alcohol consumption	11.0%	45	10.2%
Percentage of persons overweight or obese	46.9%	58	48.6%
Percentage of females overweight or obese	40.3%	57	40.3%
Percentage of males overweight or obese	52.5%	68	57.2%
Percentage of persons reporting a high/very high degree of psychological distress	12.7%	21	11.4%
Percentage of persons reporting asthma	11.2%	36	10.7%
Percentage of persons reporting type 2 diabetes	4.8%	33	4.8%
Percentage of persons who do not meet fruit and vegetable dietary guidelines	46.1%	58	48.2%
Percentage of females who do not meet fruit and vegetable dietary guidelines	43.5%	37	41.9%
Percentage of males who do not meet fruit and vegetable dietary guidelines	47.0%	72	54.8%
Percentage of persons who do not meet physical activity guidelines	23.8%	58	27.4%
Percentage of females who do not meet physical activity guidelines	25.3%	46	27.2%
Percentage of males who do not meet physical activity guidelines	22.8%	53	27.5%

Health services and utilisation

	LGA measure	Rank among LGAs	Victoria measure
Hospital inpatient separations per 1,000 population	445.9	27	422.0
Main public hospital attended	Ballarat Health Services [Base Campus]	n/a	n/a
Separations from most frequently attended public hospital	36.6%	n/a	n/a
Self-sufficiency	50.5%	34	n/a
Average length of stay (multi day stays), public hospital inpatients (days)	6.2	27	5.9
Per annum change in hospital inpatient separations, 1999-2000 to 2009-10	5.9%	10	4.1%
Projected per annum change in separations, 2009-10 to 2018-19	2.5%	49	3.7%
Emergency department presentations per 1,000 pop.	209.6	47	249.9
Primary care type presentation to emergency, per 1,000 population	114.0	32	115.6
General practitioners per 1,000 population	1.38	8	1.03
Asthma admission rate ratio	0.83	60	1.0
Diabetes complications admission rate ratio	0.84	54	1.0
Drug and alcohol clients per 1,000 population	7.6	18	5.3
Registered mental health clients per 1,000 population	15.9	21	11.0
Primary health occasions of service per 1,000 pop.	462.0	16	163.7

Aged and disability characteristics

	LGA measure	Rank among LGAs	Victoria measure
Percentage with core activity need for assistance	5.9%	14	4.5%
Percentage of persons aged 75+ who live alone	2.8%	35	2.2%
Proportion who are female	75.3%	n/a	75.1%
Proportion who are male	24.7%	n/a	24.9%
HACC clients aged 0-69 per 1,000 target population	248.7	48	257.3
HACC clients aged 70 and over per 1,000 target population	490.7	15	368.3

Cultural diversity

	LGA measure	Rank among LGAs	Victoria measure
Percentage born overseas	12.7%	37	25.5%
Percentage speaking language other than English	4.0%	43	21.6%
Percentage with low English proficiency	0.5%	41	4.0%
New settler arrivals per 100,000 population	216.2	32	527.3
Humanitarian arrivals as a percentage of new settlers	0.0%	n/a	12.5%

Social capital

	LGA measure	Rank among LGAs	Victoria measure
Index of Relative Socio-Economic Disadvantage	979.7	29	n/a
Percentage of households with internet connected	55.1%	40	61.0%
Gaming machine losses per head of adult population	\$477.4	39	\$646.6
Family incidents per 1,000 population	7.3	25	6.6
Drug usage and possession offences per 1,000 pop.	1.0	61	1.9
Total offences per 1,000 population	46.0	57	67.2
Percentage who help out as a volunteer	29.8%	26	19.7%
Quality of life index rank	n/a	55	n/a

Education and employment characteristics

	LGA measure	Rank among LGAs	Victoria measure
Unemployment rate	7.9%	9	5.5%
Full-time equivalent students	1,540	n/a	853,111
Percentage who did not complete year 12	61.5%	43	51.3%
Percentage completed higher education qualification	35.8%	25	43.2%
Percentage of students attending government school	73.8%	24	63.7%

Child and family characteristics

	LGA measure	Rank among LGAs	Victoria measure
Total fertility rate	2.32	8	1.80
Percentage of families headed by one parent	15.7%	25	15.4%
Proportion who are female	59.6%	n/a	60.8%
Proportion who are male	40.4%	n/a	39.2%
Percentage of infants fully breastfed at three months	55.9%	36	51.4%
Percentage of children fully immunised at 24-27 months	82.2%	79	93.0%
Percentage of families with children in households with income less than \$650 per week	27.2%	7	17.9%