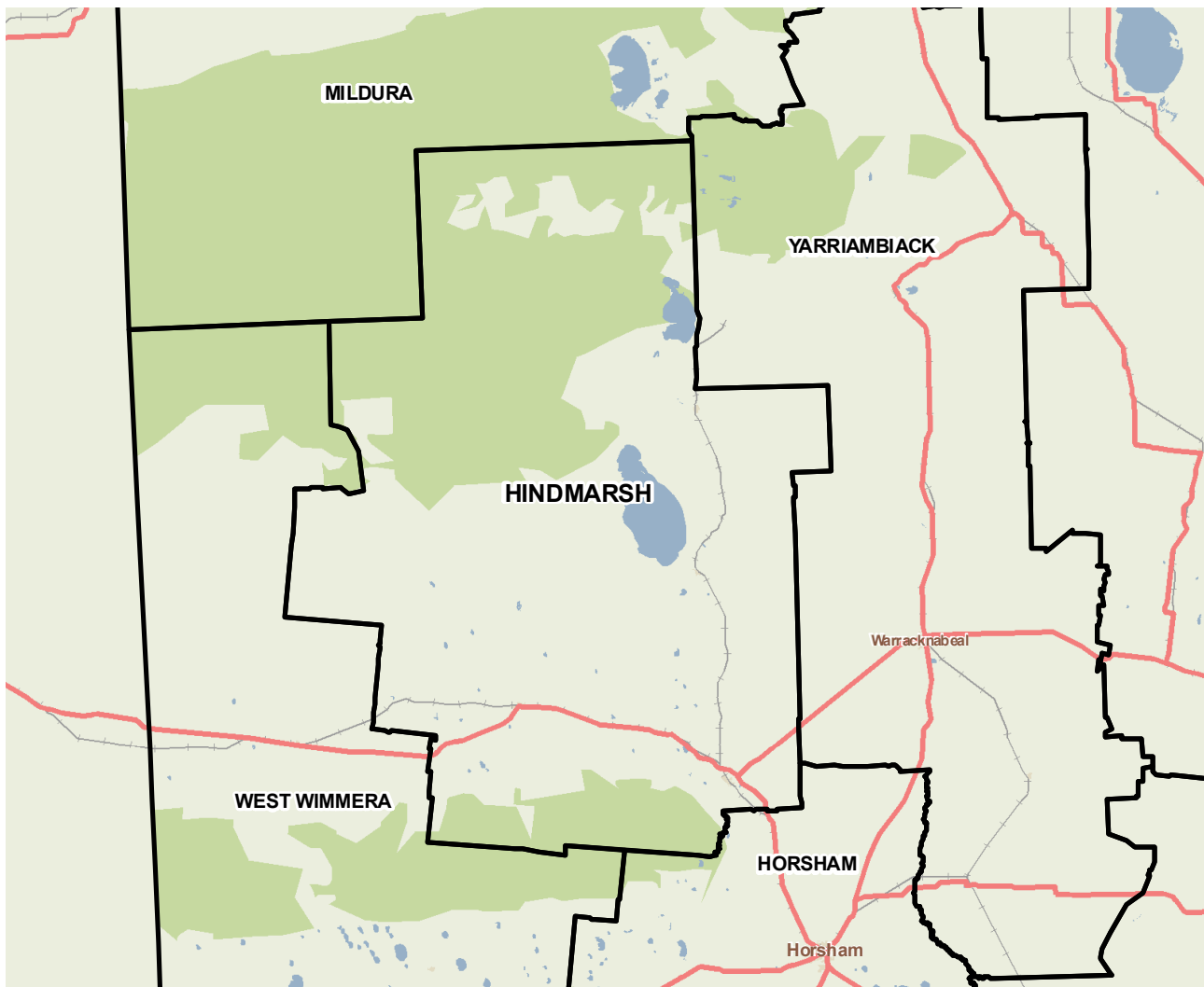


Hindmarsh (S)



Hindmarsh Shire is in the Wimmera-Mallee region, about 350 km north-west of Melbourne. It is bordered in the north by the Big Desert / Wyperfeld National Park, and in the south by the Little Desert National Park. The economy of Hindmarsh is based largely on dryland, broadacre farming, especially grain (wheat, barley and oats) and sheep, but in recent years has diversified into the production of oilseeds and legumes. Agricultural manufacture and tourism are also important. The three main industries of employment are agriculture, forestry and fishing, health care and social assistance, and retail trade.



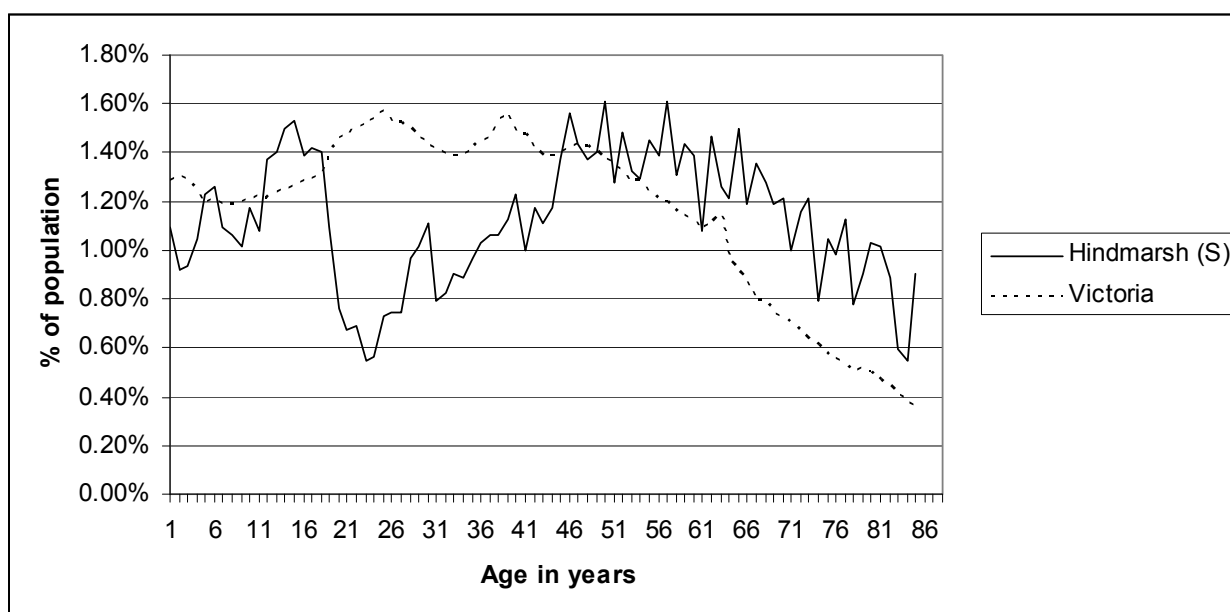
Copyright - Department of Health
Modelling, GIS and Planning Products Unit
spatial@health.vic.gov.au

Geography

Metropolitan/rural	Rural		
Departmental region	Grampians		
Area of LGA	7,550.3 sq km		
ASGC LGA code	22980		
Most populous community in LGA	Nhill		
Distance to Melbourne	367.6 km		
Travel time to Melbourne	284 minutes		
ARIA remoteness category	Moderately Accessible		
ARIA measures (low/median/high)	3.6 / 4.4 / 5.4		
Business land use	<1%	Industrial land use	<1%
Residential land use	<1%	Rural land use	59.7%
Other land use	40.2%		

Population

2009 population profile



2009 population by age and sex

	Females	Males	Total	% total LGA	% total VIC
0-14	529	570	1,099	17.7%	18.5%
15-24	295	280	575	9.3%	14.3%
25-44	665	594	1,259	20.3%	29.0%
45-64	785	942	1,727	27.8%	24.6%
65-84	634	619	1,253	20.2%	11.8%
85+	206	83	289	4.7%	1.8%
Total	3,114	3,088	6,202	100.0%	100%

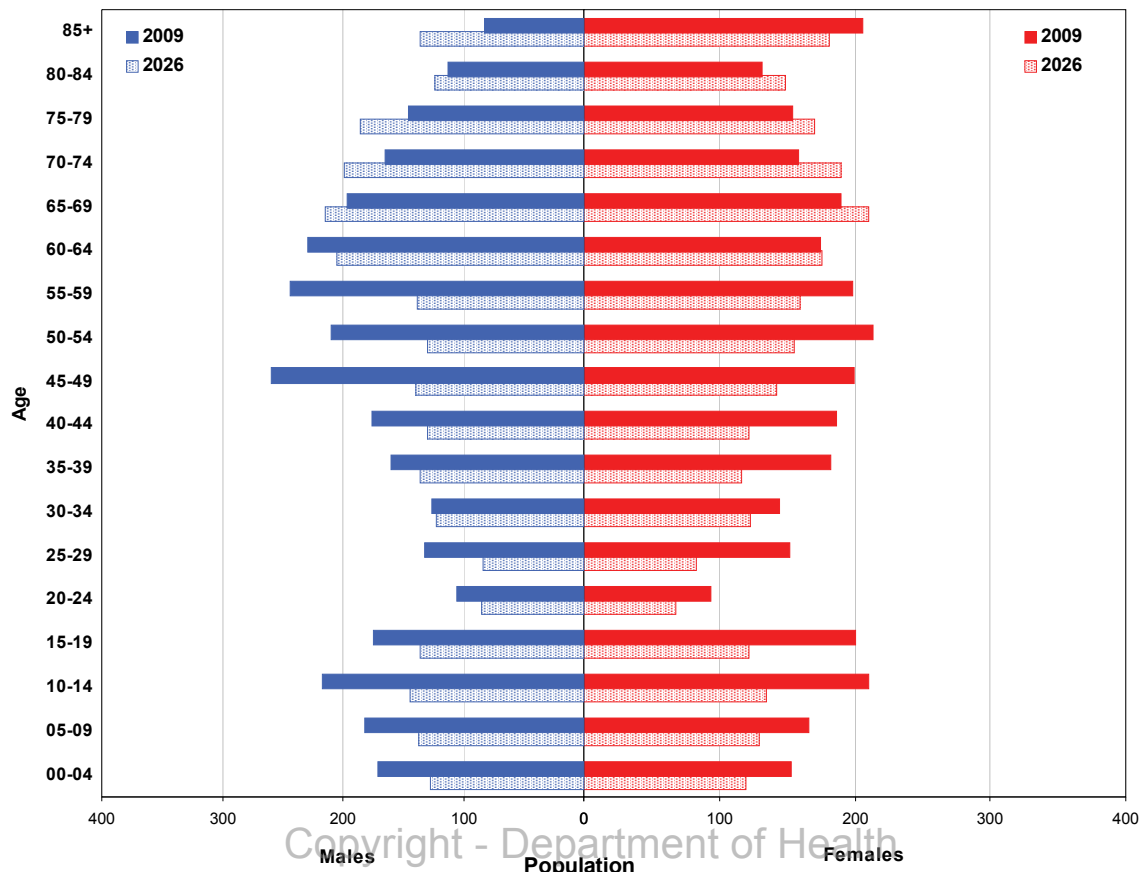
Aboriginal and Torres Strait Islander population

	LGA measure	Rank among LGAs	Victoria measure
Aboriginal and Torres Strait Islander population	1.09%	17	0.65%

Per annum population change

Time period	LGA	Victoria
1999-2009, actual change	-0.86%	1.51%
2009-2019, projected change	-1.25%	1.28%

Population projections by age group and sex, 2009 and 2026



Copyright - Department of Health
 Modelling, GIS and Planning Products Unit
 spatial@health.vic.gov.au

Services and facilities

	LGA measure	Rank among LGAs	Victoria measure
Primary care partnership	Wimmera PCP	n/a	n/a
Number of kindergartens	4	n/a	1,755
Number of schools	9	n/a	2,260
Persons receiving Disability Services support	38	62	72,298
Aged care places (high care) per 1,000 eligible pop.	54.5	9	41.3
Aged care places (low care) per 1,000 eligible pop.	67.5	3	46.0
Percentage of population near to public transport	26.6%	56	72.6%

Economic, housing and sustainability characteristics

	LGA measure	Rank among LGAs	Victoria measure
Percentage of individuals with income less than \$400 per week	55.4%	7	45.8%
Proportion who are female	59.4%	n/a	62.0%
Proportion who are male	40.6%	n/a	38.0%
Percentage of households with income less than \$650 per week	49.1%	5	30.6%
Percentage of households with housing costs greater than 40% of income	3.2%	77	9.0%
Percentage of rental housing that is affordable	100.0%	1	21.3%
Median house price	\$75,000	79	\$413,446
Median rent for three bedroom home	\$160	71	n/a
New dwellings approved per 1,000 population	1.8	76	10.3
Social housing as a percentage of total dwellings	1.4%	72	4.3%
Number of social housing dwellings	34	n/a	80,955
Percentage of households with no motor vehicle	8.5%	25	9.3%
Passenger vehicles per 1,000 population	564	55	581
Percentage motor vehicles more than ten years old	62.9%	1	46.2%
Household recycling diversion rate	37.0%	38	39.8%
Household garbage yield (kg/year)	504.0	26	467.8

Health status

	LGA measure	Rank among LGAs	Victoria measure
Male disability-adjusted life years per 1,000 pop.	158.6	7	143.0
Female disability-adjusted life years per 1,000 pop.	140.4	4	129.1
Male life expectancy	77.7	62	80.3
Female life expectancy	83.6	53	84.4
Percentage persons reporting fair or poor health status	16.8%	51	18.3%
Percentage of females reporting fair or poor health status	18.1%	30	17.5%
Percentage of males reporting fair or poor health status	14.6%	65	19.2%
Percentage of persons 18+ who are current smokers	22.5%	21	19.1%
Percentage of females 18+ who are current smokers	18.1%	43	16.9%
Percentage of males 18+ who are current smokers	25.3%	17	21.4%
Percentage of persons at risk of short-term harm from alcohol consumption	8.8%	65	10.2%
Percentage of persons overweight or obese	55.8%	22	48.6%
Percentage of females overweight or obese	54.9%	1	40.3%
Percentage of males overweight or obese	63.8%	18	57.2%
Percentage of persons reporting a high/very high degree of psychological distress	13.6%	16	11.4%
Percentage of persons reporting asthma	9.0%	67	10.7%
Percentage of persons reporting type 2 diabetes	4.0%	47	4.8%
Percentage of persons who do not meet fruit and vegetable dietary guidelines	55.4%	6	48.2%
Percentage of females who do not meet fruit and vegetable dietary guidelines	47.0%	10	41.9%
Percentage of males who do not meet fruit and vegetable dietary guidelines	63.1%	7	54.8%
Percentage of persons who do not meet physical activity guidelines	32.7%	3	27.4%
Percentage of females who do not meet physical activity guidelines	32.3%	8	27.2%
Percentage of males who do not meet physical activity guidelines	34.6%	6	27.5%

Health services and utilisation

	LGA measure	Rank among LGAs	Victoria measure
Hospital inpatient separations per 1,000 population	609.0	1	422.0
Main public hospital attended	Wimmera Base Hospital [Horsham]	n/a	n/a
Separations from most frequently attended public hospital	35.7%	n/a	n/a
Self-sufficiency	38.9%	50	n/a
Average length of stay (multi day stays), public hospital inpatients (days)	8.0	3	5.9
Per annum change in hospital inpatient separations, 1999-2000 to 2009-10	2.9%	49	4.1%
Projected per annum change in separations, 2009-10 to 2018-19	-0.1%	79	3.7%
Emergency department presentations per 1,000 pop.	221.5	41	249.9
Primary care type presentation to emergency, per 1,000 population	95.5	43	115.6
General practitioners per 1,000 population	0.81	60	1.03
Asthma admission rate ratio	0.68	69	1.0
Diabetes complications admission rate ratio	2.41	1	1.0
Drug and alcohol clients per 1,000 population	6.8	24	5.3
Registered mental health clients per 1,000 population	16.0	19	11.0
Primary health occasions of service per 1,000 pop.	1267.3	1	163.7

Aged and disability characteristics

	LGA measure	Rank among LGAs	Victoria measure
Percentage with core activity need for assistance	6.2%	8	4.5%
Percentage of persons aged 75+ who live alone	5.0%	2	2.2%
Proportion who are female	73.9%	n/a	75.1%
Proportion who are male	26.1%	n/a	24.9%
HACC clients aged 0-69 per 1,000 target population	321.4	29	257.3
HACC clients aged 70 and over per 1,000 target population	499.2	12	368.3

Cultural diversity

	LGA measure	Rank among LGAs	Victoria measure
Percentage born overseas	5.8%	74	25.5%
Percentage speaking language other than English	2.1%	65	21.6%
Percentage with low English proficiency	0.3%	58	4.0%
New settler arrivals per 100,000 population	112.9	47	527.3
Humanitarian arrivals as a percentage of new settlers	14.3%	16	12.5%

Social capital

	LGA measure	Rank among LGAs	Victoria measure
Index of Relative Socio-Economic Disadvantage	954.9	10	n/a
Percentage of households with internet connected	44.9%	78	61.0%
Gaming machine losses per head of adult population	n/a	n/a	\$646.6
Family incidents per 1,000 population	4.3	61	6.6
Drug usage and possession offences per 1,000 pop.	3.7	8	1.9
Total offences per 1,000 population	35.1	73	67.2
Percentage who help out as a volunteer	42.8%	4	19.7%
Quality of life index rank	n/a	28	n/a

Education and employment characteristics

	LGA measure	Rank among LGAs	Victoria measure
Unemployment rate	4.6%	55	5.5%
Full-time equivalent students	1,038	n/a	853,111
Percentage who did not complete year 12	74.7%	3	51.3%
Percentage completed higher education qualification	26.4%	57	43.2%
Percentage of students attending government school	84.9%	5	63.7%

Child and family characteristics

	LGA measure	Rank among LGAs	Victoria measure
Total fertility rate	2.20	23	1.80
Percentage of families headed by one parent	11.7%	67	15.4%
Proportion who are female	59.4%	n/a	60.8%
Proportion who are male	40.6%	n/a	39.2%
Percentage of infants fully breastfed at three months	33.8%	78	51.4%
Percentage of children fully immunised at 24-27 months	100.0%	1	93.0%
Percentage of families with children in households with income less than \$650 per week	25.4%	12	17.9%