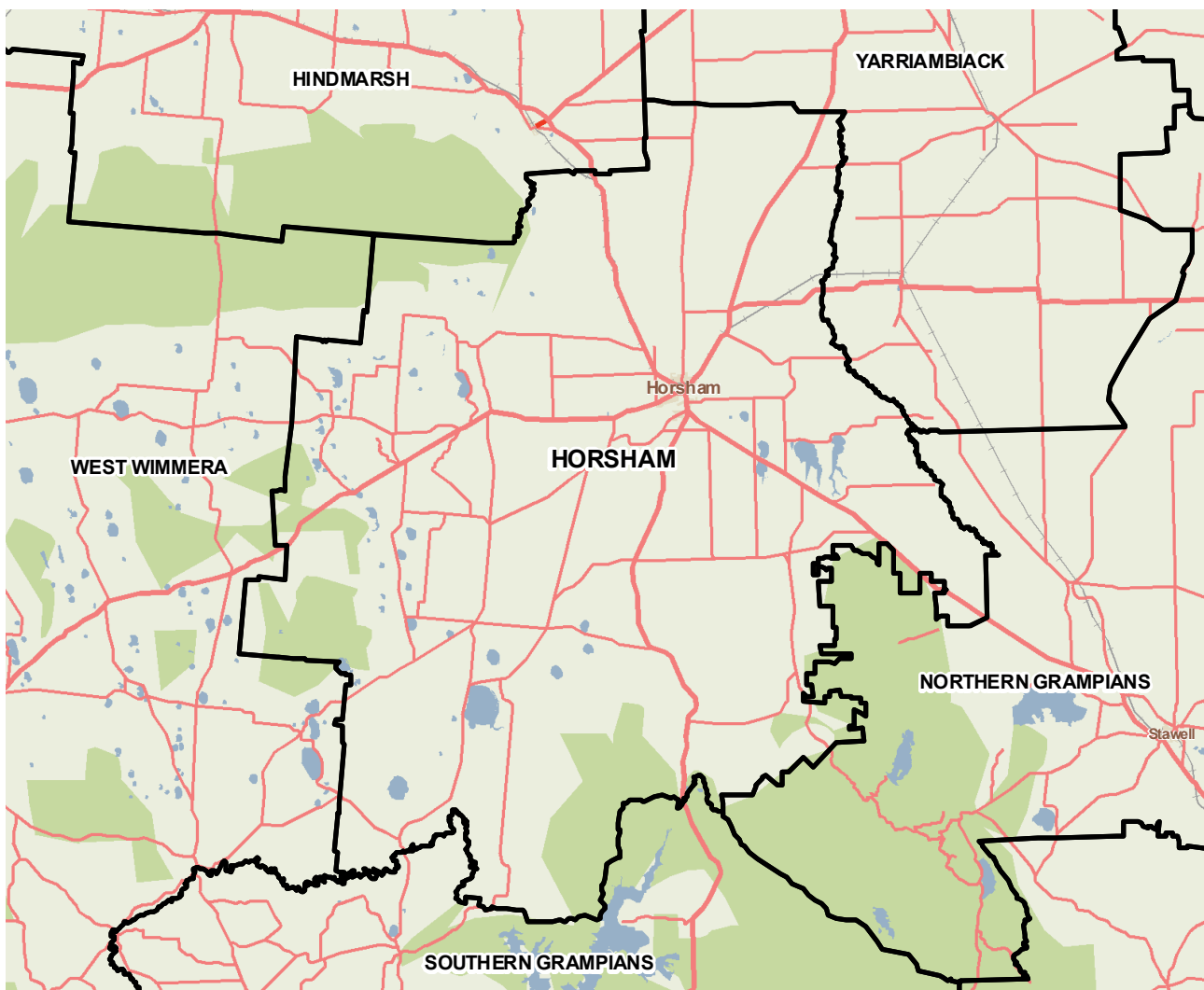


Horsham (RC)



Horsham Rural City is some 3.5 hours drive north-west of Melbourne and north of the Grampians Ranges, in Victoria's Wimmera region. The city of Horsham, with over 13,000 people, is the main provider of retail, community and government services in the Wimmera. The region has a range of educational and health facilities including several secondary colleges and a TAFE facility. The three main industries of employment are agriculture, forestry and fishing, health care and social assistance, and retail trade. On Black Saturday a fire occurred on the outskirts of Horsham, destroying 68 houses and the club house of the Horsham Golf Club, and burning 2,200 hectares. As a result, Horsham has been granted approximately \$2.7 million from the Victorian Bushfire Appeal fund.



Copyright - Department of Health
Modelling, GIS and Planning Products Unit
spatial@health.vic.gov.au

Geography

Metropolitan/rural	Rural		
Departmental region	Grampians		
Area of LGA	4,248.8 sq km		
ASGC LGA code	23190		
Most populous community in LGA	Horsham		
Distance to Melbourne	293.0 km		
Travel time to Melbourne	228 minutes		
ARIA remoteness category	Accessible		
ARIA measures (low/median/high)	2.6 / 3.2 / 3.6		
Business land use	<1%	Industrial land use	<1%
Residential land use	<1%	Rural land use	85.8%
Other land use	13.5%		

Population

2009 population profile



2009 population by age and sex

	Females	Males	Total	% total LGA	% total VIC
0-14	1,951	1,997	3,948	19.7%	18.5%
15-24	1,227	1,319	2,546	12.7%	14.3%
25-44	2,541	2,406	4,947	24.7%	29.0%
45-64	2,612	2,598	5,210	26.0%	24.6%
65-84	1,578	1,361	2,939	14.7%	11.8%
85+	310	142	452	2.3%	1.8%
Total	10,219	9,823	20,042	100.0%	100%

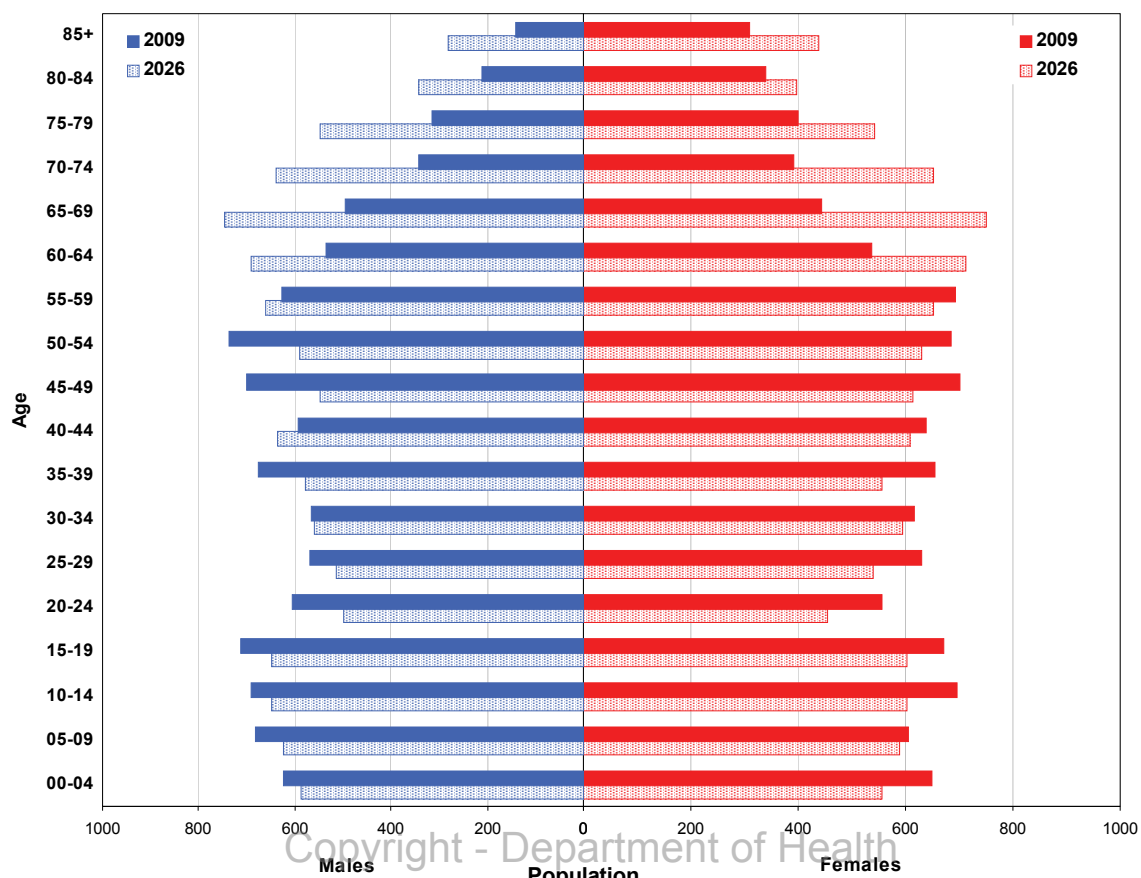
Aboriginal and Torres Strait Islander population

	LGA measure	Rank among LGAs	Victoria measure
Aboriginal and Torres Strait Islander population	1.23%	11	0.65%

Per annum population change

Time period	LGA	Victoria
1999-2009, actual change	0.87%	1.51%
2009-2019, projected change	0.13%	1.28%

Population projections by age group and sex, 2009 and 2026



Copyright - Department of Health
 Modelling, GIS and Planning Products Unit
 spatial@health.vic.gov.au

Services and facilities

	LGA measure	Rank among LGAs	Victoria measure
Primary care partnership	Wimmera PCP	n/a	n/a
Number of kindergartens	9	n/a	1,755
Number of schools	10	n/a	2,260
Persons receiving Disability Services support	430	39	72,298
Aged care places (high care) per 1,000 eligible pop.	34.8	54	41.3
Aged care places (low care) per 1,000 eligible pop.	53.8	21	46.0
Percentage of population near to public transport	16.9%	68	72.6%

Economic, housing and sustainability characteristics

	LGA measure	Rank among LGAs	Victoria measure
Percentage of individuals with income less than \$400 per week	47.0%	51	45.8%
Proportion who are female	62.0%	n/a	62.0%
Proportion who are male	38.0%	n/a	38.0%
Percentage of households with income less than \$650 per week	38.0%	34	30.6%
Percentage of households with housing costs greater than 40% of income	6.0%	63	9.0%
Percentage of rental housing that is affordable	78.5%	23	21.3%
Median house price	\$180,000	66	\$413,446
Median rent for three bedroom home	\$210	60	n/a
New dwellings approved per 1,000 population	6.8	48	10.3
Social housing as a percentage of total dwellings	5.7%	17	4.3%
Number of social housing dwellings	431	n/a	80,955
Percentage of households with no motor vehicle	7.6%	34	9.3%
Passenger vehicles per 1,000 population	570	51	581
Percentage motor vehicles more than ten years old	54.4%	24	46.2%
Household recycling diversion rate	17.9%	77	39.8%
Household garbage yield (kg/year)	623.4	5	467.8

Health status

	LGA measure	Rank among LGAs	Victoria measure
Male disability-adjusted life years per 1,000 pop.	151.4	24	143.0
Female disability-adjusted life years per 1,000 pop.	136.0	21	129.1
Male life expectancy	77.8	61	80.3
Female life expectancy	84.1	33	84.4
Percentage persons reporting fair or poor health status	18.0%	37	18.3%
Percentage of females reporting fair or poor health status	20.4%	18	17.5%
Percentage of males reporting fair or poor health status	15.8%	60	19.2%
Percentage of persons 18+ who are current smokers	13.3%	74	19.1%
Percentage of females 18+ who are current smokers	10.5%	72	16.9%
Percentage of males 18+ who are current smokers	13.3%	75	21.4%
Percentage of persons at risk of short-term harm from alcohol consumption	9.8%	57	10.2%
Percentage of persons overweight or obese	53.9%	30	48.6%
Percentage of females overweight or obese	43.4%	48	40.3%
Percentage of males overweight or obese	66.8%	10	57.2%
Percentage of persons reporting a high/very high degree of psychological distress	10.0%	55	11.4%
Percentage of persons reporting asthma	13.2%	14	10.7%
Percentage of persons reporting type 2 diabetes	3.7%	51	4.8%
Percentage of persons who do not meet fruit and vegetable dietary guidelines	50.2%	35	48.2%
Percentage of females who do not meet fruit and vegetable dietary guidelines	44.1%	29	41.9%
Percentage of males who do not meet fruit and vegetable dietary guidelines	50.4%	60	54.8%
Percentage of persons who do not meet physical activity guidelines	29.6%	16	27.4%
Percentage of females who do not meet physical activity guidelines	29.7%	17	27.2%
Percentage of males who do not meet physical activity guidelines	28.3%	26	27.5%

Health services and utilisation

	LGA measure	Rank among LGAs	Victoria measure
Hospital inpatient separations per 1,000 population	482.0	11	422.0
Main public hospital attended	Wimmera Base Hospital [Horsham]	n/a	n/a
Separations from most frequently attended public hospital	76.5%	n/a	n/a
Self-sufficiency	86.3%	8	n/a
Average length of stay (multi day stays), public hospital inpatients (days)	4.8	76	5.9
Per annum change in hospital inpatient separations, 1999-2000 to 2009-10	4.7%	20	4.1%
Projected per annum change in separations, 2009-10 to 2018-19	2.0%	62	3.7%
Emergency department presentations per 1,000 pop.	555.5	3	249.9
Primary care type presentation to emergency, per 1,000 population	330.9	3	115.6
General practitioners per 1,000 population	0.89	54	1.03
Asthma admission rate ratio	0.65	71	1.0
Diabetes complications admission rate ratio	1.00	42	1.0
Drug and alcohol clients per 1,000 population	14.2	2	5.3
Registered mental health clients per 1,000 population	16.6	15	11.0
Primary health occasions of service per 1,000 pop.	706.4	6	163.7

Aged and disability characteristics

	LGA measure	Rank among LGAs	Victoria measure
Percentage with core activity need for assistance	4.4%	53	4.5%
Percentage of persons aged 75+ who live alone	2.9%	34	2.2%
Proportion who are female	75.8%	n/a	75.1%
Proportion who are male	24.2%	n/a	24.9%
HACC clients aged 0-69 per 1,000 target population	332.3	27	257.3
HACC clients aged 70 and over per 1,000 target population	383.3	50	368.3

Cultural diversity

	LGA measure	Rank among LGAs	Victoria measure
Percentage born overseas	5.1%	76	25.5%
Percentage speaking language other than English	2.3%	59	21.6%
Percentage with low English proficiency	0.3%	66	4.0%
New settler arrivals per 100,000 population	74.8	63	527.3
Humanitarian arrivals as a percentage of new settlers	0.0%	n/a	12.5%

Social capital

	LGA measure	Rank among LGAs	Victoria measure
Index of Relative Socio-Economic Disadvantage	993.3	40	n/a
Percentage of households with internet connected	51.7%	55	61.0%
Gaming machine losses per head of adult population	\$626.1	29	\$646.6
Family incidents per 1,000 population	11.0	8	6.6
Drug usage and possession offences per 1,000 pop.	5.0	4	1.9
Total offences per 1,000 population	72.1	22	67.2
Percentage who help out as a volunteer	35.7%	10	19.7%
Quality of life index rank	n/a	35	n/a

Education and employment characteristics

	LGA measure	Rank among LGAs	Victoria measure
Unemployment rate	5.6%	35	5.5%
Full-time equivalent students	3,147	n/a	853,111
Percentage who did not complete year 12	66.3%	31	51.3%
Percentage completed higher education qualification	29.0%	44	43.2%
Percentage of students attending government school	74.8%	21	63.7%

Child and family characteristics

	LGA measure	Rank among LGAs	Victoria measure
Total fertility rate	2.07	40	1.80
Percentage of families headed by one parent	13.8%	44	15.4%
Proportion who are female	60.3%	n/a	60.8%
Proportion who are male	39.7%	n/a	39.2%
Percentage of infants fully breastfed at three months	57.5%	27	51.4%
Percentage of children fully immunised at 24-27 months	98.0%	9	93.0%
Percentage of families with children in households with income less than \$650 per week	20.8%	38	17.9%