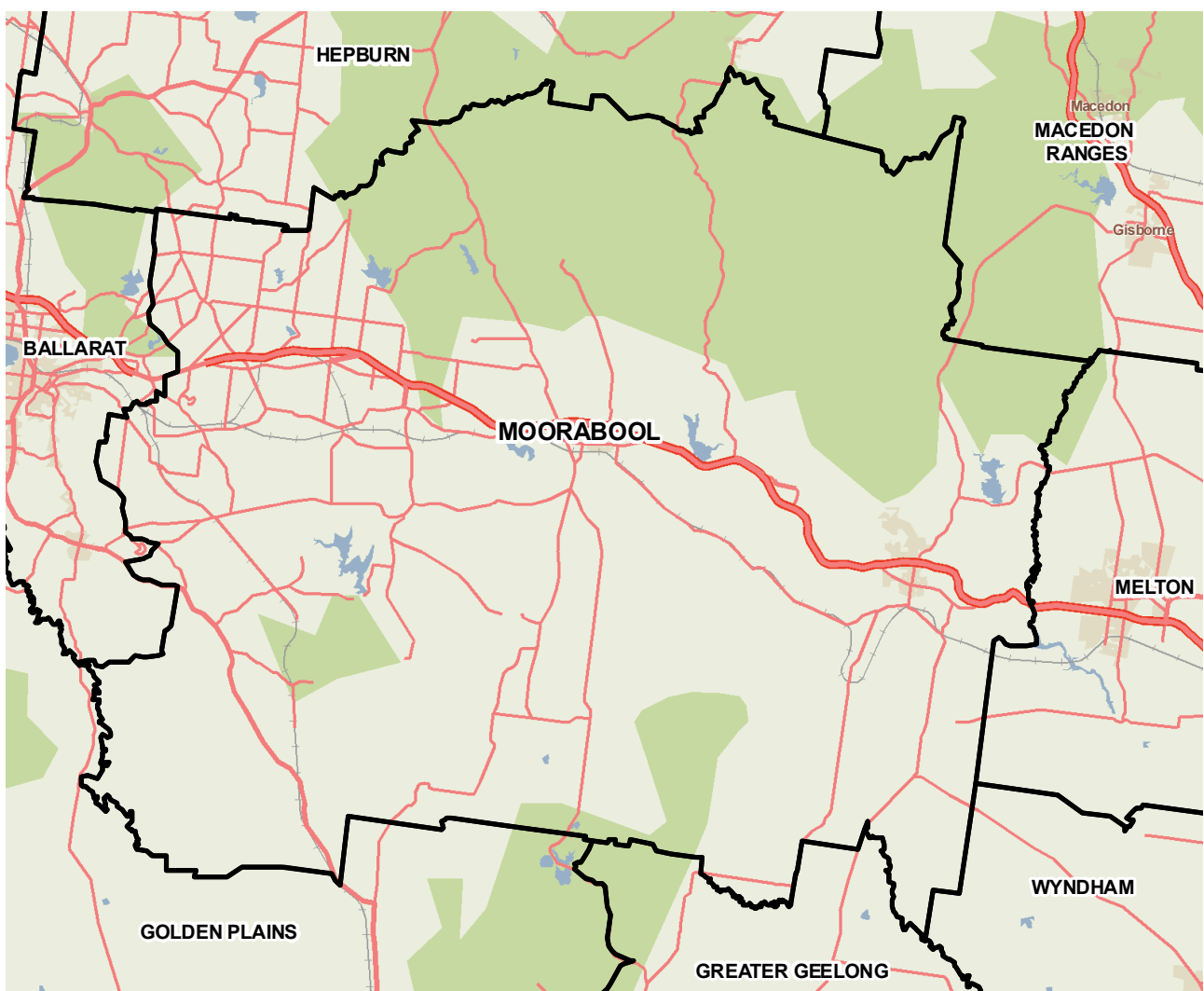


# Moorabool (S)



Moorabool Shire is a semi-rural municipality between Melbourne and Ballarat. The main towns are Bacchus Marsh (45 km west of the Melbourne CBD) and Ballan (70 km west of the city). About 40 per cent of residents work in Melbourne. A significant number also work in Ballarat. The three main industries of employment are construction, health care and social assistance, and manufacturing.



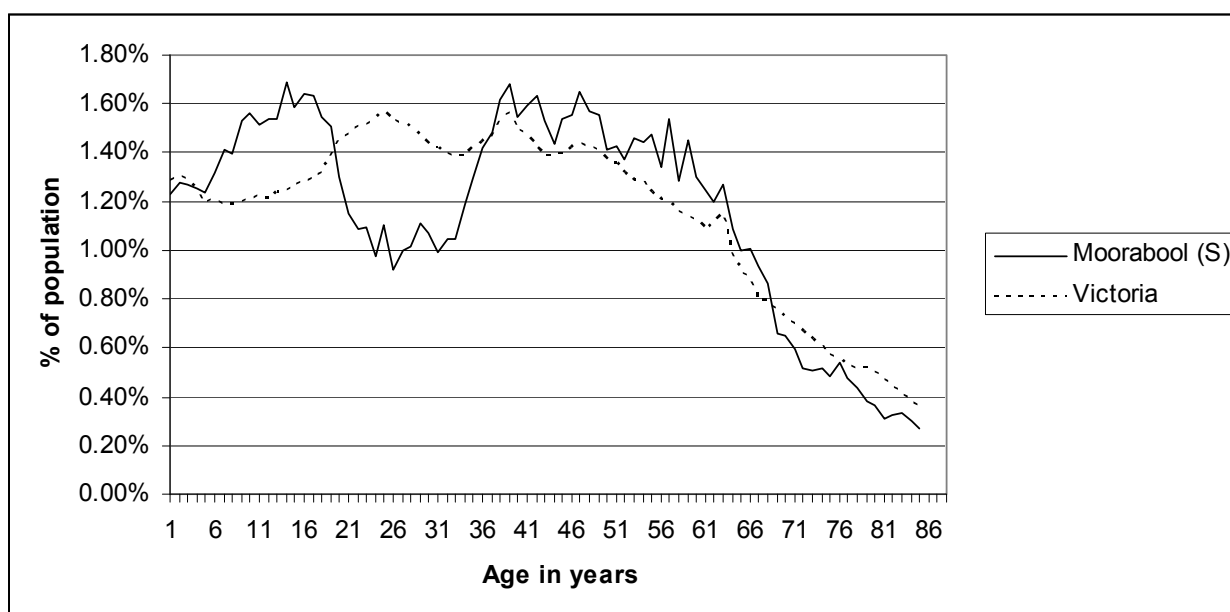
Copyright - Department of Health  
Modelling, GIS and Planning Products Unit  
[spatial@health.vic.gov.au](mailto:spatial@health.vic.gov.au)

## Geography

Metropolitan/rural	Rural		
Departmental region	Grampians		
Area of LGA	2,109.5 sq km		
ASGC LGA code	25150		
Most populous community in LGA	Bacchus Marsh		
Distance to Melbourne	52.8 km		
Travel time to Melbourne	43 minutes		
ARIA remoteness category	Highly Accessible		
ARIA measures (low/median/high)	0.5 / 0.8 / 1.1		
Business land use	<1%	Industrial land use	<1%
Residential land use	1.2%	Rural land use	67.5%
Other land use	31.1%		

## Population

### 2009 population profile



### 2009 population by age and sex

	Females	Males	Total	% total LGA	% total VIC
0-14	2,907	3,052	5,959	21.4%	18.5%
15-24	1,735	1,897	3,632	13.0%	14.3%
25-44	3,761	3,540	7,301	26.2%	29.0%
45-64	3,817	3,887	7,704	27.6%	24.6%
65-84	1,504	1,415	2,919	10.5%	11.8%
85+	247	134	381	1.4%	1.8%
<b>Total</b>	<b>13,971</b>	<b>13,925</b>	<b>27,896</b>	<b>100.0%</b>	<b>100%</b>

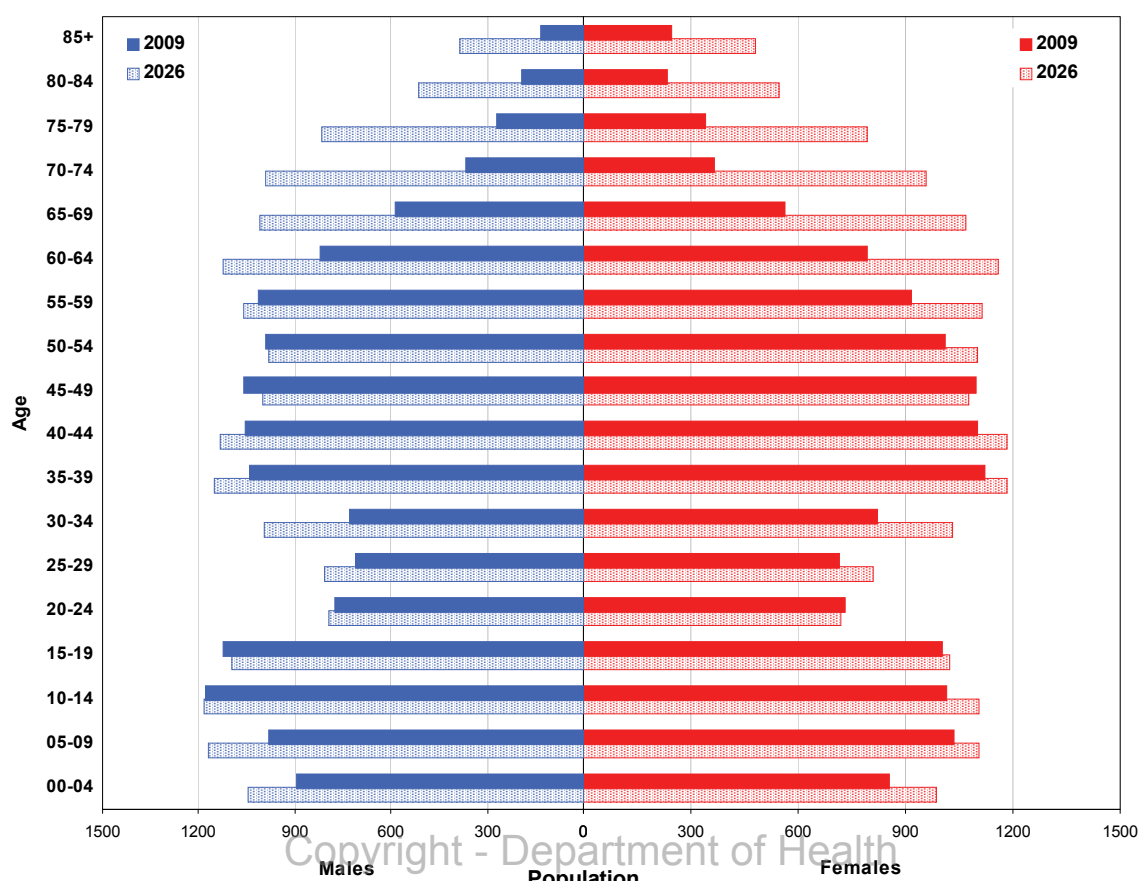
### Aboriginal and Torres Strait Islander population

	LGA measure	Rank among LGAs	Victoria measure
Aboriginal and Torres Strait Islander population	0.72%	36	0.65%

### Per annum population change

Time period	LGA	Victoria
1999-2009, actual change	1.39%	1.51%
2009-2019, projected change	1.29%	1.28%

### Population projections by age group and sex, 2009 and 2026



Copyright - Department of Health  
 Modelling, GIS and Planning Products Unit  
 spatial@health.vic.gov.au

## Services and facilities

	LGA measure	Rank among LGAs	Victoria measure
Primary care partnership	Central Highlands PCP	n/a	n/a
Number of kindergartens	7	n/a	1,755
Number of schools	20	n/a	2,260
Persons receiving Disability Services support	7	67	72,298
Aged care places (high care) per 1,000 eligible pop.	24.6	76	41.3
Aged care places (low care) per 1,000 eligible pop.	40.9	63	46.0
Percentage of population near to public transport	33.6%	49	72.6%

## Economic, housing and sustainability characteristics

	LGA measure	Rank among LGAs	Victoria measure
Percentage of individuals with income less than \$400 per week	47.1%	50	45.8%
Proportion who are female	63.8%	n/a	62.0%
Proportion who are male	36.2%	n/a	38.0%
Percentage of households with income less than \$650 per week	29.9%	54	30.6%
Percentage of households with housing costs greater than 40% of income	7.6%	41	9.0%
Percentage of rental housing that is affordable	65.6%	36	21.3%
Median house price	\$296,562	38	\$413,446
Median rent for three bedroom home	\$250	36	n/a
New dwellings approved per 1,000 population	18.5	9	10.3
Social housing as a percentage of total dwellings	3.6%	41	4.3%
Number of social housing dwellings	328	n/a	80,955
Percentage of households with no motor vehicle	4.5%	67	9.3%
Passenger vehicles per 1,000 population	564	56	581
Percentage motor vehicles more than ten years old	50.3%	45	46.2%
Household recycling diversion rate	36.6%	40	39.8%
Household garbage yield (kg/year)	427.0	53	467.8

## Health status

	LGA measure	Rank among LGAs	Victoria measure
Male disability-adjusted life years per 1,000 pop.	144.4	42	143.0
Female disability-adjusted life years per 1,000 pop.	124.5	56	129.1
Male life expectancy	79.3	31	80.3
Female life expectancy	84.3	27	84.4
Percentage persons reporting fair or poor health status	18.6%	35	18.3%
Percentage of females reporting fair or poor health status	13.8%	61	17.5%
Percentage of males reporting fair or poor health status	22.2%	18	19.2%
Percentage of persons 18+ who are current smokers	18.4%	49	19.1%
Percentage of females 18+ who are current smokers	21.3%	21	16.9%
Percentage of males 18+ who are current smokers	15.3%	69	21.4%
Percentage of persons at risk of short-term harm from alcohol consumption	7.0%	69	10.2%
Percentage of persons overweight or obese	53.1%	38	48.6%
Percentage of females overweight or obese	49.4%	13	40.3%
Percentage of males overweight or obese	58.9%	41	57.2%
Percentage of persons reporting a high/very high degree of psychological distress	14.1%	13	11.4%
Percentage of persons reporting asthma	11.7%	29	10.7%
Percentage of persons reporting type 2 diabetes	5.0%	30	4.8%
Percentage of persons who do not meet fruit and vegetable dietary guidelines	50.6%	31	48.2%
Percentage of females who do not meet fruit and vegetable dietary guidelines	46.8%	11	41.9%
Percentage of males who do not meet fruit and vegetable dietary guidelines	55.8%	40	54.8%
Percentage of persons who do not meet physical activity guidelines	28.7%	23	27.4%
Percentage of females who do not meet physical activity guidelines	28.9%	23	27.2%
Percentage of males who do not meet physical activity guidelines	30.2%	19	27.5%

## Health services and utilisation

	LGA measure	Rank among LGAs	Victoria measure
Hospital inpatient separations per 1,000 population	356.3	72	422.0
Main public hospital attended	Ballarat Health Services [Base Campus]	n/a	n/a
Separations from most frequently attended public hospital	18.7%	n/a	n/a
Self-sufficiency	27.7%	66	n/a
Average length of stay (multi day stays), public hospital inpatients (days)	5.1	71	5.9
Per annum change in hospital inpatient separations, 1999-2000 to 2009-10	4.1%	30	4.1%
Projected per annum change in separations, 2009-10 to 2018-19	3.3%	29	3.7%
Emergency department presentations per 1,000 pop.	165.6	56	249.9
Primary care type presentation to emergency, per 1,000 population	72.9	50	115.6
General practitioners per 1,000 population	0.58	75	1.03
Asthma admission rate ratio	0.55	74	1.0
Diabetes complications admission rate ratio	0.76	65	1.0
Drug and alcohol clients per 1,000 population	4.5	50	5.3
Registered mental health clients per 1,000 population	11.8	48	11.0
Primary health occasions of service per 1,000 pop.	66.7	74	163.7

## Aged and disability characteristics

	LGA measure	Rank among LGAs	Victoria measure
Percentage with core activity need for assistance	4.1%	60	4.5%
Percentage of persons aged 75+ who live alone	1.4%	67	2.2%
Proportion who are female	77.7%	n/a	75.1%
Proportion who are male	22.3%	n/a	24.9%
HACC clients aged 0-69 per 1,000 target population	287.7	35	257.3
HACC clients aged 70 and over per 1,000 target population	483.5	17	368.3

## Cultural diversity

	LGA measure	Rank among LGAs	Victoria measure
Percentage born overseas	12.2%	38	25.5%
Percentage speaking language other than English	3.9%	45	21.6%
Percentage with low English proficiency	0.4%	47	4.0%
New settler arrivals per 100,000 population	50.2	71	527.3
Humanitarian arrivals as a percentage of new settlers	0.0%	n/a	12.5%

## Social capital

	LGA measure	Rank among LGAs	Victoria measure
Index of Relative Socio-Economic Disadvantage	1,011.8	52	n/a
Percentage of households with internet connected	60.7%	24	61.0%
Gaming machine losses per head of adult population	\$401.4	45	\$646.6
Family incidents per 1,000 population	7.1	26	6.6
Drug usage and possession offences per 1,000 pop.	1.4	44	1.9
Total offences per 1,000 population	47.7	54	67.2
Percentage who help out as a volunteer	23.2%	43	19.7%
Quality of life index rank	n/a	25	n/a

## Education and employment characteristics

	LGA measure	Rank among LGAs	Victoria measure
Unemployment rate	5.2%	40	5.5%
Full-time equivalent students	4,441	n/a	853,111
Percentage who did not complete year 12	64.5%	35	51.3%
Percentage completed higher education qualification	29.2%	41	43.2%
Percentage of students attending government school	61.8%	58	63.7%

## Child and family characteristics

	LGA measure	Rank among LGAs	Victoria measure
Total fertility rate	2.05	45	1.80
Percentage of families headed by one parent	14.4%	38	15.4%
Proportion who are female	58.4%	n/a	60.8%
Proportion who are male	41.6%	n/a	39.2%
Percentage of infants fully breastfed at three months	49.9%	54	51.4%
Percentage of children fully immunised at 24-27 months	92.9%	49	93.0%
Percentage of families with children in households with income less than \$650 per week	16.4%	58	17.9%