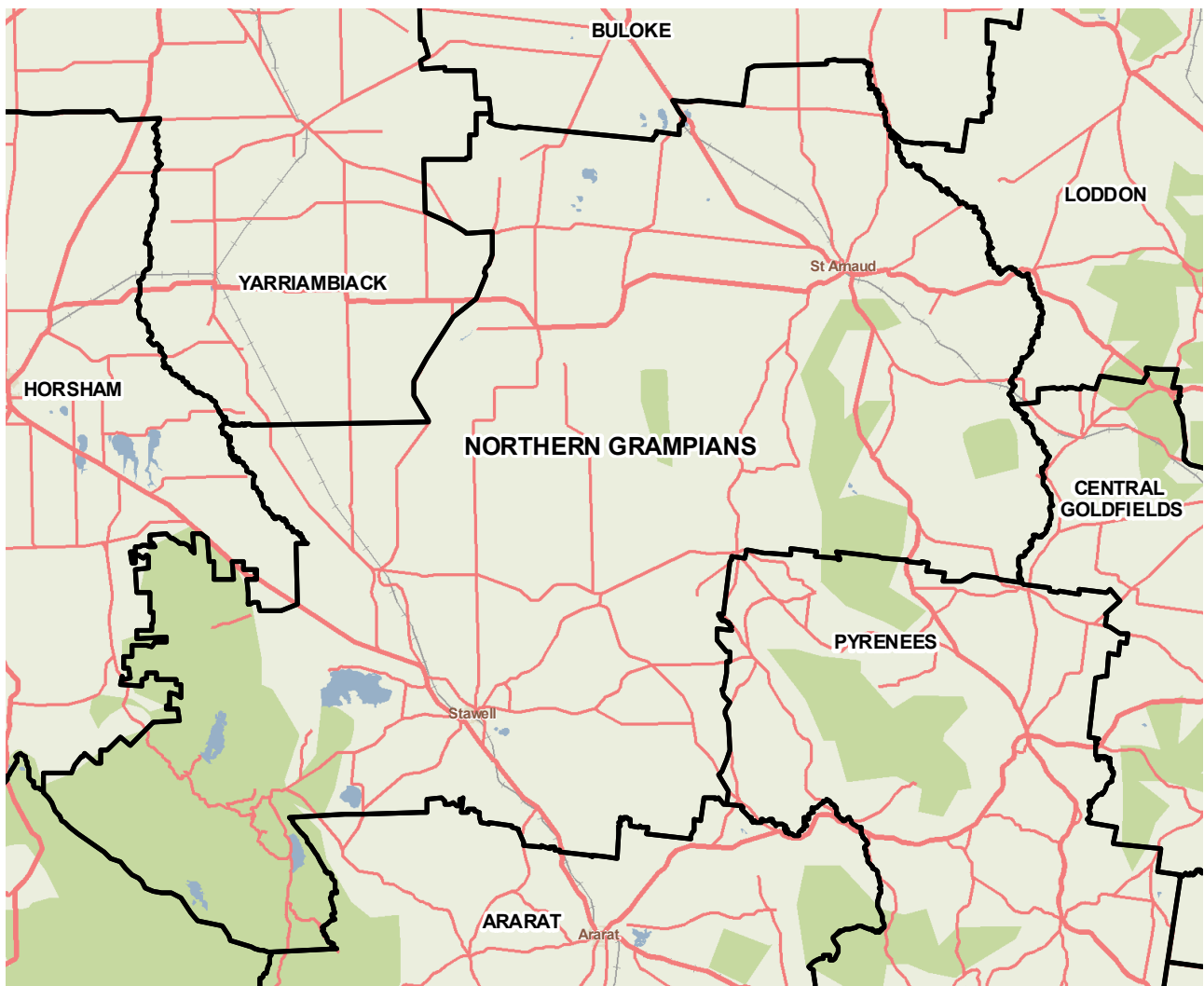


Northern Grampians (S)



The Northern Grampians Shire is located to the north-east of the Grampians and about 230 km north-west of Melbourne. Its economy is based on agriculture, gold mining, tourism, wine production and manufacturing. Stawell, the main centre, is home to brick, textiles and meat production, as well as the Stawell Gift, a foot race held over Easter since 1878. The Grampians area is a popular holiday destination. The three main industries of employment are agriculture, forestry and fishing, health care and social assistance, and manufacturing.



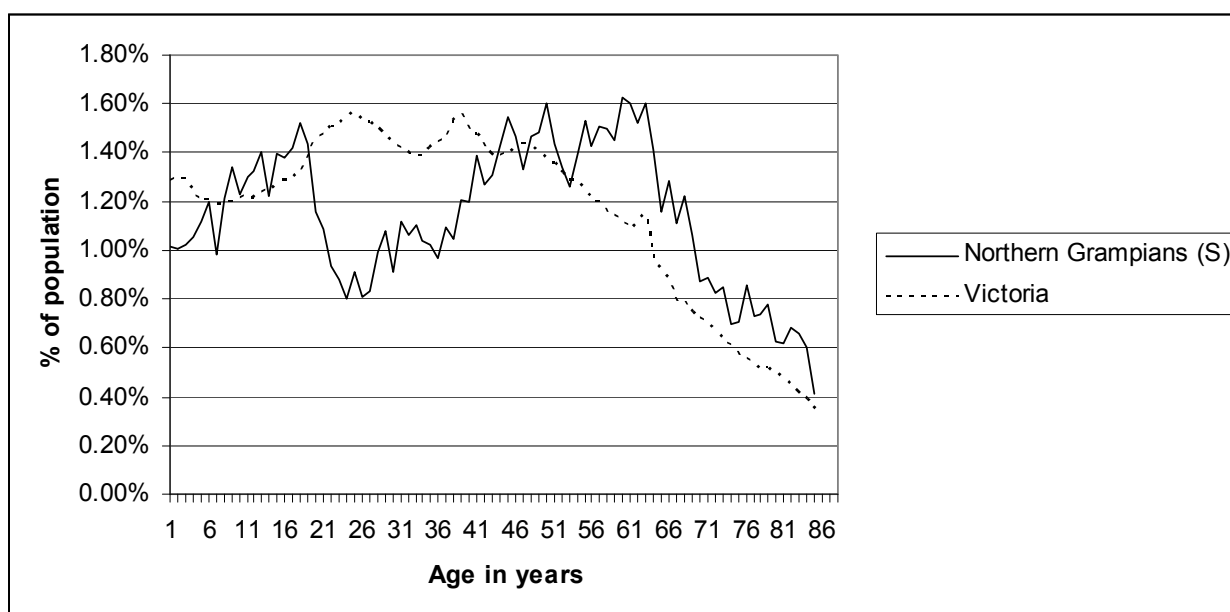
Copyright - Department of Health
Modelling, GIS and Planning Products Unit
spatial@health.vic.gov.au

Geography

Metropolitan/rural	Rural		
Departmental region	Grampians		
Area of LGA	5,728.5 sq km		
ASGC LGA code	25810		
Most populous community in LGA	Stawell		
Distance to Melbourne	228.1 km		
Travel time to Melbourne	177 minutes		
ARIA remoteness category	Accessible		
ARIA measures (low/median/high)	1.9 / 2.5 / 3.2		
Business land use	<1%	Industrial land use	<1%
Residential land use	<1%	Rural land use	78.0%
Other land use	21.7%		

Population

2009 population profile



2009 population by age and sex

	Females	Males	Total	% total LGA	% total VIC
0-14	1,054	1,144	2,198	17.8%	18.5%
15-24	681	742	1,423	11.5%	14.3%
25-44	1,379	1,387	2,766	22.4%	29.0%
45-64	1,765	1,829	3,594	29.1%	24.6%
65-84	1,063	939	2,002	16.2%	11.8%
85+	217	140	357	2.9%	1.8%
Total	6,159	6,181	12,340	100.0%	100%

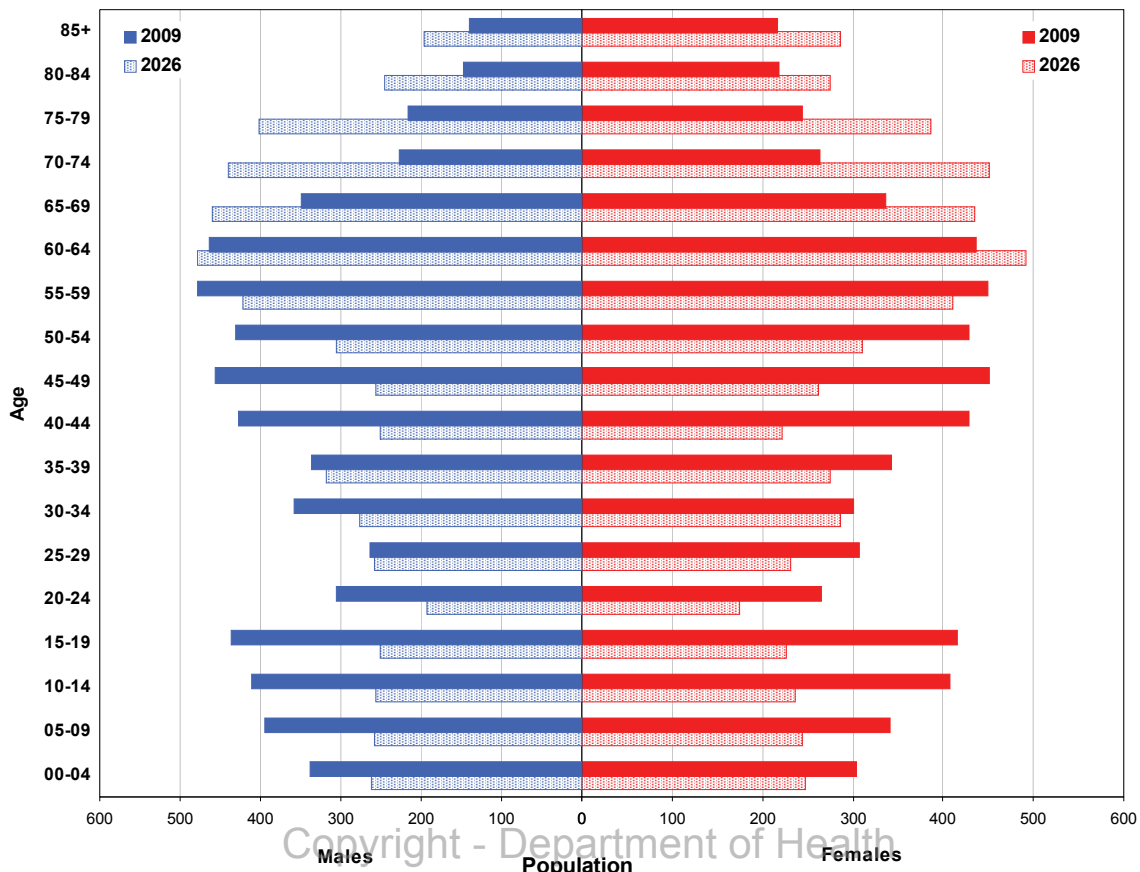
Aboriginal and Torres Strait Islander population

	LGA measure	Rank among LGAs	Victoria measure
Aboriginal and Torres Strait Islander population	0.75%	34	0.65%

Per annum population change

Time period	LGA	Victoria
1999-2009, actual change	-0.68%	1.51%
2009-2019, projected change	-0.78%	1.28%

Population projections by age group and sex, 2009 and 2026



Copyright - Department of Health
 Modelling, GIS and Planning Products Unit
 spatial@health.vic.gov.au

Services and facilities

	LGA measure	Rank among LGAs	Victoria measure
Primary care partnership	Grampians Pyrenees PCP	n/a	n/a
Number of kindergartens	3	n/a	1,755
Number of schools	14	n/a	2,260
Persons receiving Disability Services support	306	41	72,298
Aged care places (high care) per 1,000 eligible pop.	39.4	38	41.3
Aged care places (low care) per 1,000 eligible pop.	64.0	4	46.0
Percentage of population near to public transport	28.6%	53	72.6%

Economic, housing and sustainability characteristics

	LGA measure	Rank among LGAs	Victoria measure
Percentage of individuals with income less than \$400 per week	53.4%	14	45.8%
Proportion who are female	59.5%	n/a	62.0%
Proportion who are male	40.5%	n/a	38.0%
Percentage of households with income less than \$650 per week	43.7%	13	30.6%
Percentage of households with housing costs greater than 40% of income	4.7%	72	9.0%
Percentage of rental housing that is affordable	98.4%	6	21.3%
Median house price	\$138,000	75	\$413,446
Median rent for three bedroom home	\$165	70	n/a
New dwellings approved per 1,000 population	4.2	68	10.3
Social housing as a percentage of total dwellings	4.2%	32	4.3%
Number of social housing dwellings	208	n/a	80,955
Percentage of households with no motor vehicle	8.8%	20	9.3%
Passenger vehicles per 1,000 population	541	68	581
Percentage motor vehicles more than ten years old	56.7%	11	46.2%
Household recycling diversion rate	25.8%	72	39.8%
Household garbage yield (kg/year)	427.1	52	467.8

Health status

	LGA measure	Rank among LGAs	Victoria measure
Male disability-adjusted life years per 1,000 pop.	158.6	7	143.0
Female disability-adjusted life years per 1,000 pop.	140.4	4	129.1
Male life expectancy	75.7	78	80.3
Female life expectancy	82.8	68	84.4
Percentage persons reporting fair or poor health status	21.2%	16	18.3%
Percentage of females reporting fair or poor health status	23.0%	8	17.5%
Percentage of males reporting fair or poor health status	18.1%	46	19.2%
Percentage of persons 18+ who are current smokers	17.5%	57	19.1%
Percentage of females 18+ who are current smokers	16.8%	52	16.9%
Percentage of males 18+ who are current smokers	18.0%	57	21.4%
Percentage of persons at risk of short-term harm from alcohol consumption	11.8%	34	10.2%
Percentage of persons overweight or obese	53.0%	39	48.6%
Percentage of females overweight or obese	47.5%	29	40.3%
Percentage of males overweight or obese	58.9%	42	57.2%
Percentage of persons reporting a high/very high degree of psychological distress	12.0%	30	11.4%
Percentage of persons reporting asthma	8.3%	70	10.7%
Percentage of persons reporting type 2 diabetes	4.3%	44	4.8%
Percentage of persons who do not meet fruit and vegetable dietary guidelines	54.1%	11	48.2%
Percentage of females who do not meet fruit and vegetable dietary guidelines	51.5%	5	41.9%
Percentage of males who do not meet fruit and vegetable dietary guidelines	55.5%	42	54.8%
Percentage of persons who do not meet physical activity guidelines	28.8%	20	27.4%
Percentage of females who do not meet physical activity guidelines	23.5%	58	27.2%
Percentage of males who do not meet physical activity guidelines	33.7%	7	27.5%

Health services and utilisation

	LGA measure	Rank among LGAs	Victoria measure
Hospital inpatient separations per 1,000 population	489.0	10	422.0
Main public hospital attended	Stawell Regional Health	n/a	n/a
Separations from most frequently attended public hospital	40.4%	n/a	n/a
Self-sufficiency	47.1%	37	n/a
Average length of stay (multi day stays), public hospital inpatients (days)	5.2	66	5.9
Per annum change in hospital inpatient separations, 1999-2000 to 2009-10	2.0%	66	4.1%
Projected per annum change in separations, 2009-10 to 2018-19	1.2%	74	3.7%
Emergency department presentations per 1,000 pop.	59.4	76	249.9
Primary care type presentation to emergency, per 1,000 population	22.4	75	115.6
General practitioners per 1,000 population	0.93	46	1.03
Asthma admission rate ratio	0.94	48	1.0
Diabetes complications admission rate ratio	1.29	15	1.0
Drug and alcohol clients per 1,000 population	10.5	7	5.3
Registered mental health clients per 1,000 population	15.6	23	11.0
Primary health occasions of service per 1,000 pop.	973.7	4	163.7

Aged and disability characteristics

	LGA measure	Rank among LGAs	Victoria measure
Percentage with core activity need for assistance	6.7%	4	4.5%
Percentage of persons aged 75+ who live alone	3.7%	9	2.2%
Proportion who are female	72.0%	n/a	75.1%
Proportion who are male	28.0%	n/a	24.9%
HACC clients aged 0-69 per 1,000 target population	438.4	15	257.3
HACC clients aged 70 and over per 1,000 target population	457.1	24	368.3

Cultural diversity

	LGA measure	Rank among LGAs	Victoria measure
Percentage born overseas	6.1%	72	25.5%
Percentage speaking language other than English	1.7%	69	21.6%
Percentage with low English proficiency	0.4%	52	4.0%
New settler arrivals per 100,000 population	97.2	53	527.3
Humanitarian arrivals as a percentage of new settlers	0.0%	n/a	12.5%

Social capital

	LGA measure	Rank among LGAs	Victoria measure
Index of Relative Socio-Economic Disadvantage	946.4	6	n/a
Percentage of households with internet connected	46.0%	74	61.0%
Gaming machine losses per head of adult population	\$579.3	33	\$646.6
Family incidents per 1,000 population	5.9	41	6.6
Drug usage and possession offences per 1,000 pop.	5.6	3	1.9
Total offences per 1,000 population	74.5	17	67.2
Percentage who help out as a volunteer	32.7%	17	19.7%
Quality of life index rank	n/a	62	n/a

Education and employment characteristics

	LGA measure	Rank among LGAs	Victoria measure
Unemployment rate	7.2%	13	5.5%
Full-time equivalent students	1,761	n/a	853,111
Percentage who did not complete year 12	70.5%	14	51.3%
Percentage completed higher education qualification	24.3%	70	43.2%
Percentage of students attending government school	81.8%	10	63.7%

Child and family characteristics

	LGA measure	Rank among LGAs	Victoria measure
Total fertility rate	1.93	58	1.80
Percentage of families headed by one parent	13.4%	48	15.4%
Proportion who are female	59.0%	n/a	60.8%
Proportion who are male	41.0%	n/a	39.2%
Percentage of infants fully breastfed at three months	49.3%	56	51.4%
Percentage of children fully immunised at 24-27 months	96.2%	14	93.0%
Percentage of families with children in households with income less than \$650 per week	22.1%	29	17.9%