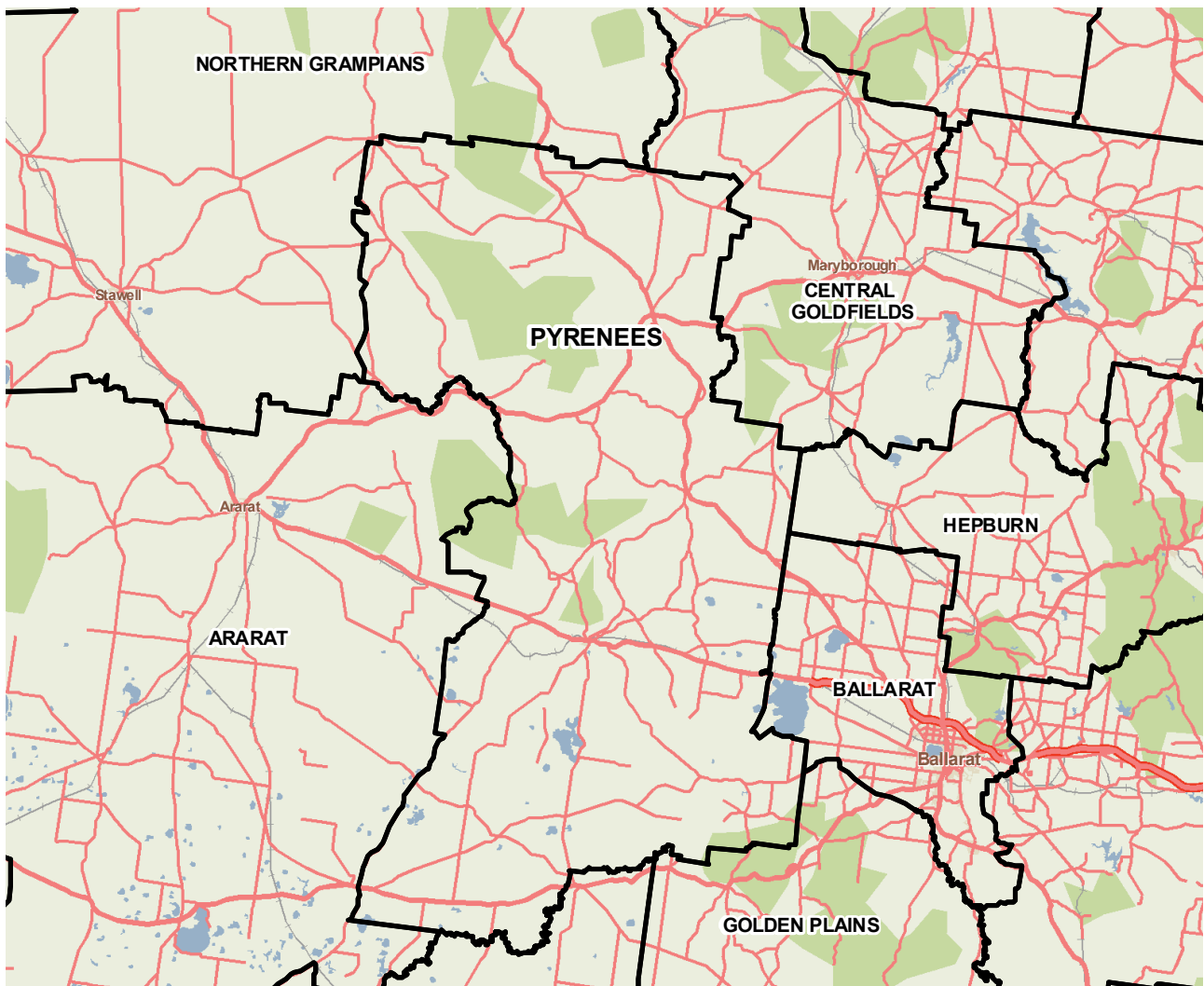


# Pyrenees (S)



Pyrenees Shire is located in the Central West of Victoria, about 130 km north-west of Melbourne. It is heavily dependent on primary industry and is renowned for its wool, viticulture and forestry activity. Thirty per cent of the workforce is involved in agriculture. Key areas of production are wool, cereal, hay crops and meat. Grape and wine production has recently expanded significantly. Gold, along with sand, gravel and slate all contribute to the economy. The three main industries of employment are agriculture, forestry and fishing, health care and social assistance, and manufacturing.



Copyright - Department of Health  
Modelling, GIS and Planning Products Unit  
[spatial@health.vic.gov.au](mailto:spatial@health.vic.gov.au)

## Geography

Metropolitan/rural	Rural		
Departmental region	Grampians		
Area of LGA	3,433.0 sq km		
ASGC LGA code	25990		
Most populous community in LGA	Beaufort		
Distance to Melbourne	155.7 km		
Travel time to Melbourne	121 minutes		
ARIA remoteness category	Highly Accessible		
ARIA measures (low/median/high)	0.9 / 1.5 / 2.2		
Business land use	<1%	Industrial land use	<1%
Residential land use	<1%	Rural land use	86.4%
Other land use	13.3%		

## Population

### 2009 population profile



## 2009 population by age and sex

	Females	Males	Total	% total LGA	% total VIC
0-14	575	565	1,140	16.6%	18.5%
15-24	337	345	682	9.9%	14.3%
25-44	732	767	1,499	21.8%	29.0%
45-64	1,038	1,131	2,169	31.5%	24.6%
65-84	554	660	1,214	17.6%	11.8%
85+	99	82	181	2.6%	1.8%
<b>Total</b>	<b>3,335</b>	<b>3,550</b>	<b>6,885</b>	<b>100.0%</b>	<b>100%</b>

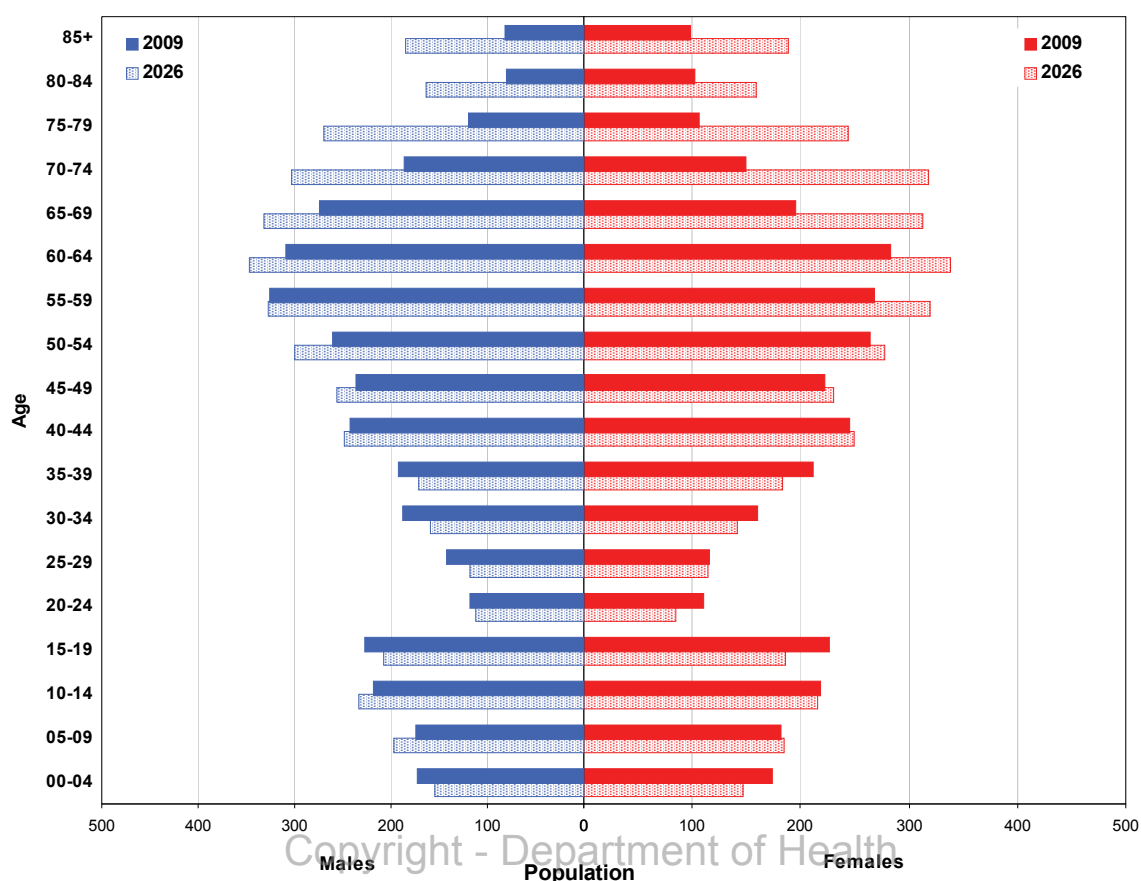
## Aboriginal and Torres Strait Islander population

	LGA measure	Rank among LGAs	Victoria measure
Aboriginal and Torres Strait Islander population	0.62%	46	0.65%

## Per annum population change

Time period	LGA	Victoria
1999-2009, actual change	0.18%	1.51%
2009-2019, projected change	1.01%	1.28%

## Population projections by age group and sex, 2009 and 2026



## Services and facilities

	LGA measure	Rank among LGAs	Victoria measure
Primary care partnership	Grampians Pyrenees PCP	n/a	n/a
Number of kindergartens	3	n/a	1,755
Number of schools	9	n/a	2,260
Persons receiving Disability Services support	0	72	72,298
Aged care places (high care) per 1,000 eligible pop.	45.6	24	41.3
Aged care places (low care) per 1,000 eligible pop.	23.8	79	46.0
Percentage of population near to public transport	12.5%	74	72.6%

## Economic, housing and sustainability characteristics

	LGA measure	Rank among LGAs	Victoria measure
Percentage of individuals with income less than \$400 per week	58.7%	4	45.8%
Proportion who are female	57.1%	n/a	62.0%
Proportion who are male	42.9%	n/a	38.0%
Percentage of households with income less than \$650 per week	49.7%	4	30.6%
Percentage of households with housing costs greater than 40% of income	5.2%	67	9.0%
Percentage of rental housing that is affordable	100.0%	1	21.3%
Median house price	\$150,500	72	\$413,446
Median rent for three bedroom home	\$	n/a	n/a
New dwellings approved per 1,000 population	5.1	61	10.3
Social housing as a percentage of total dwellings	1.3%	73	4.3%
Number of social housing dwellings	33	n/a	80,955
Percentage of households with no motor vehicle	4.7%	64	9.3%
Passenger vehicles per 1,000 population	593	32	581
Percentage motor vehicles more than ten years old	61.0%	5	46.2%
Household recycling diversion rate	28.2%	64	39.8%
Household garbage yield (kg/year)	400.8	62	467.8

## Health status

	LGA measure	Rank among LGAs	Victoria measure
Male disability-adjusted life years per 1,000 pop.	158.6	7	143.0
Female disability-adjusted life years per 1,000 pop.	140.4	4	129.1
Male life expectancy	77.3	69	80.3
Female life expectancy	82.9	67	84.4
Percentage persons reporting fair or poor health status	25.2%	2	18.3%
Percentage of females reporting fair or poor health status	22.9%	10	17.5%
Percentage of males reporting fair or poor health status	27.0%	7	19.2%
Percentage of persons 18+ who are current smokers	31.4%	1	19.1%
Percentage of females 18+ who are current smokers	31.3%	1	16.9%
Percentage of males 18+ who are current smokers	32.4%	2	21.4%
Percentage of persons at risk of short-term harm from alcohol consumption	14.3%	15	10.2%
Percentage of persons overweight or obese	56.7%	18	48.6%
Percentage of females overweight or obese	44.4%	44	40.3%
Percentage of males overweight or obese	69.4%	7	57.2%
Percentage of persons reporting a high/very high degree of psychological distress	19.1%	2	11.4%
Percentage of persons reporting asthma	13.4%	12	10.7%
Percentage of persons reporting type 2 diabetes	6.3%	13	4.8%
Percentage of persons who do not meet fruit and vegetable dietary guidelines	51.4%	25	48.2%
Percentage of females who do not meet fruit and vegetable dietary guidelines	39.8%	55	41.9%
Percentage of males who do not meet fruit and vegetable dietary guidelines	62.7%	8	54.8%
Percentage of persons who do not meet physical activity guidelines	27.9%	30	27.4%
Percentage of females who do not meet physical activity guidelines	31.6%	9	27.2%
Percentage of males who do not meet physical activity guidelines	24.3%	45	27.5%

## Health services and utilisation

	LGA measure	Rank among LGAs	Victoria measure
Hospital inpatient separations per 1,000 population	417.0	47	422.0
Main public hospital attended	Ballarat Health Services [Base Campus]	n/a	n/a
Separations from most frequently attended public hospital	37.4%	n/a	n/a
Self-sufficiency	52.2%	30	n/a
Average length of stay (multi day stays), public hospital inpatients (days)	7.1	6	5.9
Per annum change in hospital inpatient separations, 1999-2000 to 2009-10	2.3%	59	4.1%
Projected per annum change in separations, 2009-10 to 2018-19	2.3%	57	3.7%
Emergency department presentations per 1,000 pop.	217.3	42	249.9
Primary care type presentation to emergency, per 1,000 population	125.2	24	115.6
General practitioners per 1,000 population	0.79	63	1.03
Asthma admission rate ratio	0.93	49	1.0
Diabetes complications admission rate ratio	0.93	48	1.0
Drug and alcohol clients per 1,000 population	3.3	67	5.3
Registered mental health clients per 1,000 population	12.3	43	11.0
Primary health occasions of service per 1,000 pop.	138.0	50	163.7

## Aged and disability characteristics

	LGA measure	Rank among LGAs	Victoria measure
Percentage with core activity need for assistance	6.0%	11	4.5%
Percentage of persons aged 75+ who live alone	3.1%	22	2.2%
Proportion who are female	64.4%	n/a	75.1%
Proportion who are male	35.6%	n/a	24.9%
HACC clients aged 0-69 per 1,000 target population	683.2	8	257.3
HACC clients aged 70 and over per 1,000 target population	588.9	6	368.3

## Cultural diversity

	LGA measure	Rank among LGAs	Victoria measure
Percentage born overseas	9.4%	54	25.5%
Percentage speaking language other than English	2.0%	66	21.6%
Percentage with low English proficiency	0.3%	64	4.0%
New settler arrivals per 100,000 population	0.0	79	527.3
Humanitarian arrivals as a percentage of new settlers	0.0%	n/a	12.5%

## Social capital

	LGA measure	Rank among LGAs	Victoria measure
Index of Relative Socio-Economic Disadvantage	943.9	5	n/a
Percentage of households with internet connected	48.1%	68	61.0%
Gaming machine losses per head of adult population	n/a	n/a	\$646.6
Family incidents per 1,000 population	6.1	38	6.6
Drug usage and possession offences per 1,000 pop.	1.5	38	1.9
Total offences per 1,000 population	44.6	59	67.2
Percentage who help out as a volunteer	33.4%	14	19.7%
Quality of life index rank	n/a	59	n/a

## Education and employment characteristics

	LGA measure	Rank among LGAs	Victoria measure
Unemployment rate	8.1%	6	5.5%
Full-time equivalent students	626	n/a	853,111
Percentage who did not complete year 12	71.5%	11	51.3%
Percentage completed higher education qualification	25.1%	67	43.2%
Percentage of students attending government school	84.1%	6	63.7%

## Child and family characteristics

	LGA measure	Rank among LGAs	Victoria measure
Total fertility rate	2.26	13	1.80
Percentage of families headed by one parent	13.3%	49	15.4%
Proportion who are female	56.4%	n/a	60.8%
Proportion who are male	43.6%	n/a	39.2%
Percentage of infants fully breastfed at three months	67.3%	4	51.4%
Percentage of children fully immunised at 24-27 months	100.0%	1	93.0%
Percentage of families with children in households with income less than \$650 per week	31.2%	3	17.9%