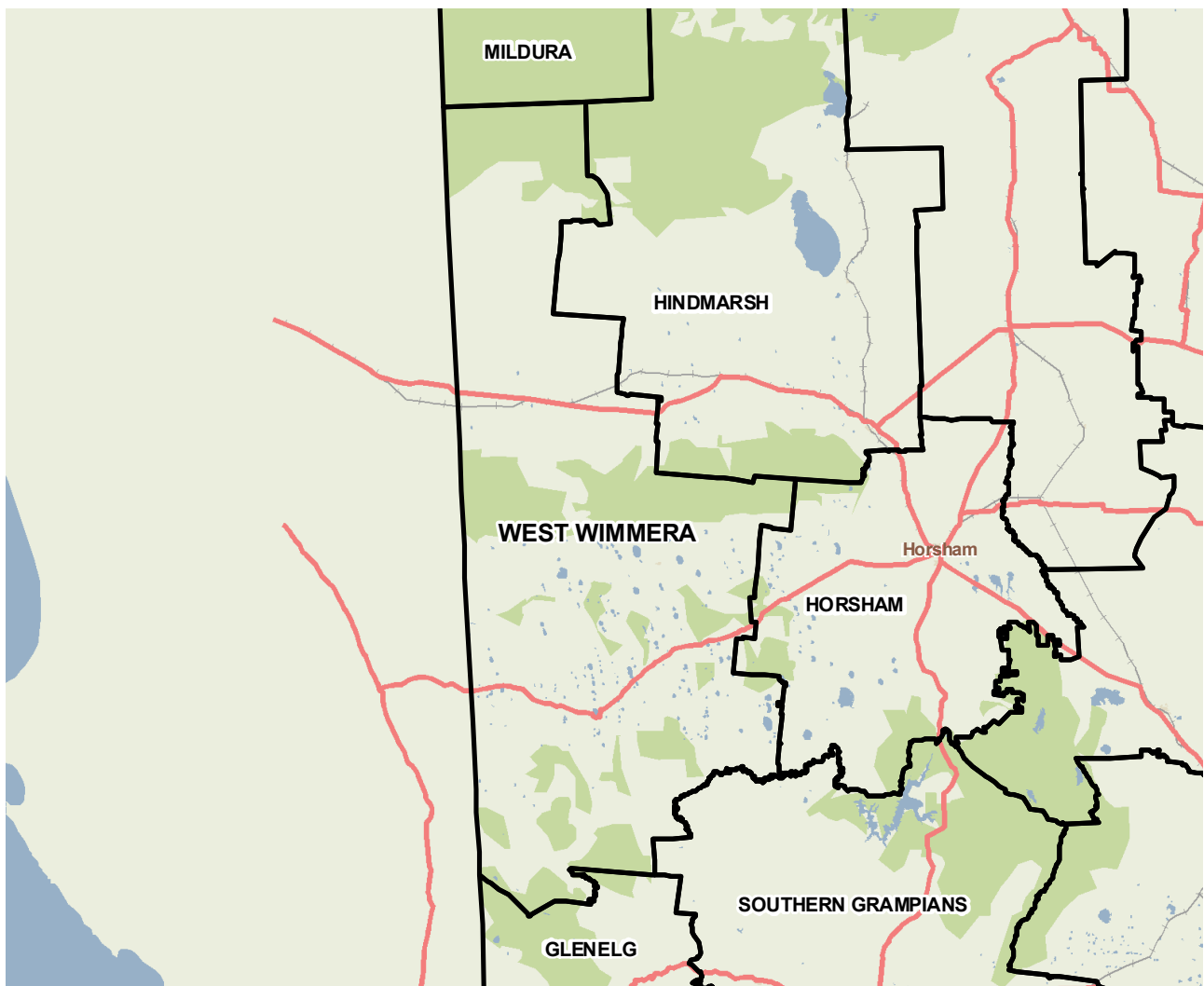


West Wimmera (S)



West Wimmera lies in western Victoria on the South Australian border, about half way between Melbourne and Adelaide. The economy of the shire is dominated by agricultural production, particularly wheat, sheep and vegetables. The area also boasts a large variety of natural environments, including the Big Desert Wilderness Park, the Little Desert National Park and about 3,000 wetlands. The three main industries of employment are agriculture, forestry and fishing, education and training, and health care and social assistance.



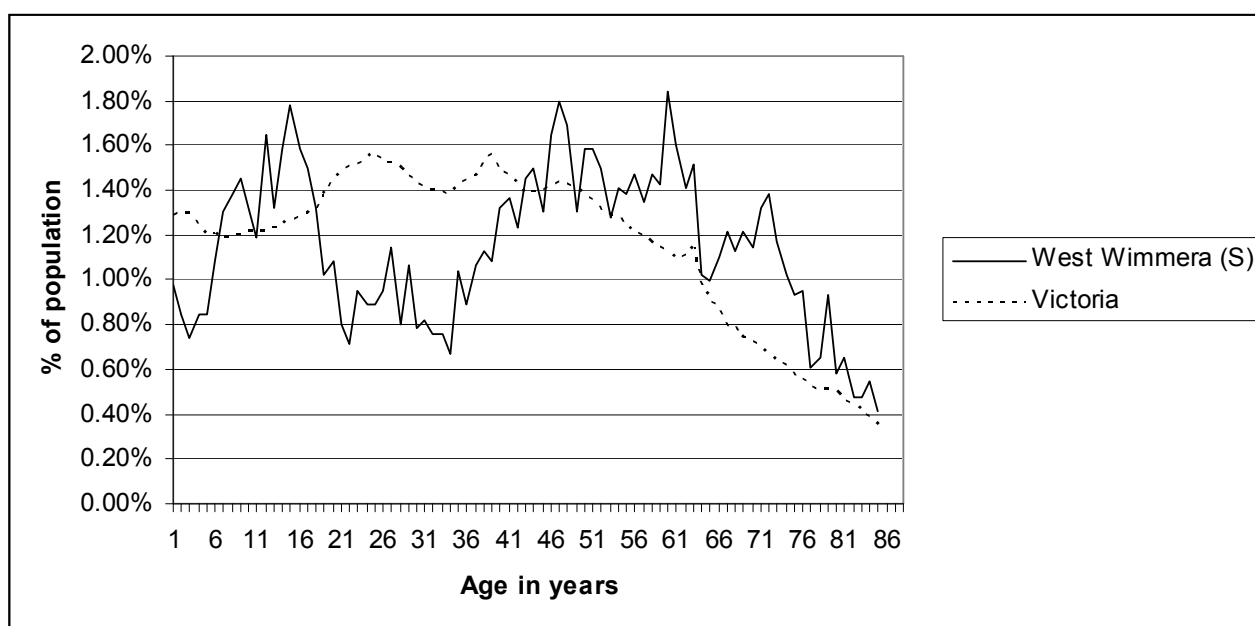
Copyright - Department of Health
Modelling, GIS and Planning Products Unit
spatial@health.vic.gov.au

Geography

Metropolitan/rural	Rural		
Departmental region	Grampians		
Area of LGA	9,106.1 sq km		
ASGC LGA code	26890		
Most populous community in LGA	Edenhope		
Distance to Melbourne	389.3 km		
Travel time to Melbourne	298 minutes		
ARIA remoteness category	Moderately Accessible		
ARIA measures (low/median/high)	3.5 / 4.1 / 5.0		
Business land use	<1%	Industrial land use	<1%
Residential land use	<1%	Rural land use	41.6%
Other land use	57.9%		

Population

2009 population profile



2009 population by age and sex

	Females	Males	Total	% total LGA	% total VIC
0-14	434	411	845	18.3%	18.5%
15-24	223	273	496	10.8%	14.3%
25-44	472	503	975	21.1%	29.0%
45-64	638	713	1,351	29.3%	24.6%
65-84	429	398	827	17.9%	11.8%
85+	89	30	119	2.6%	1.8%
Total	2,285	2,328	4,613	100.0%	100%

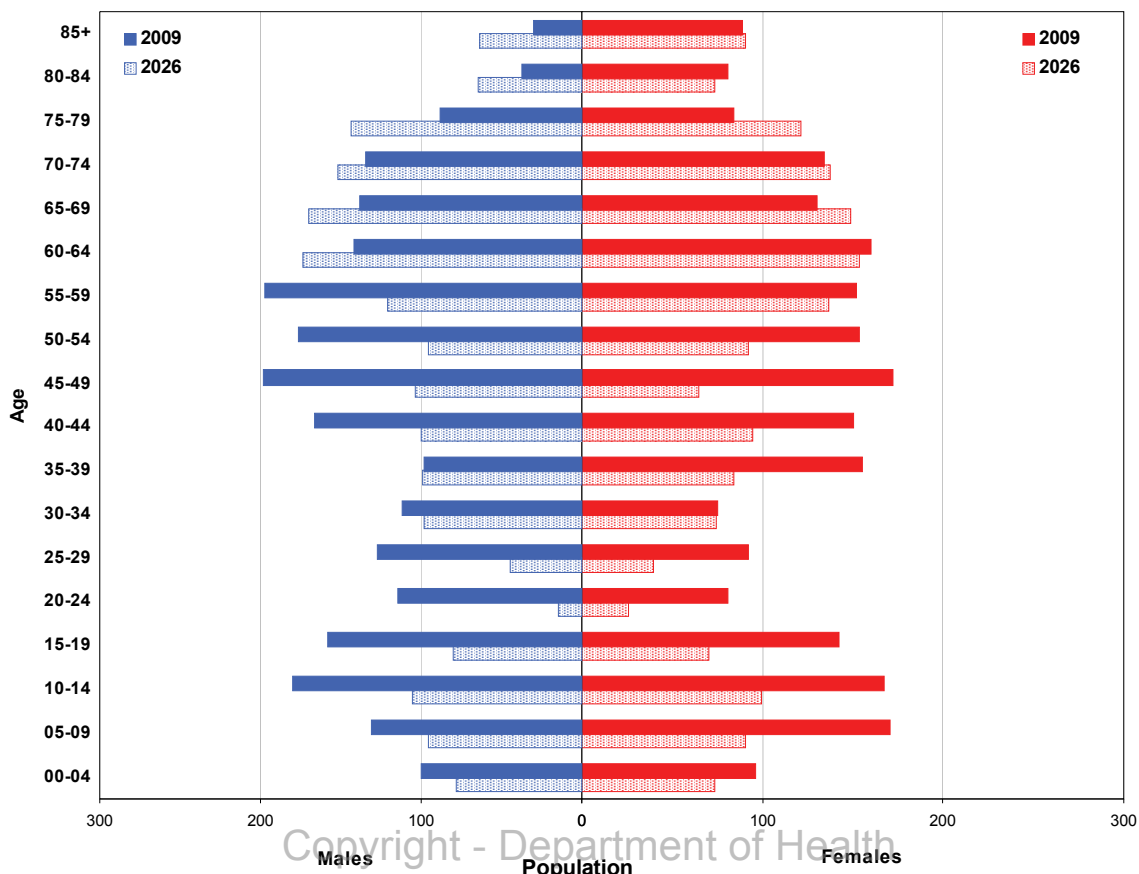
Aboriginal and Torres Strait Islander population

	LGA measure	Rank among LGAs	Victoria measure
Aboriginal and Torres Strait Islander population	0.41%	62	0.65%

Per annum population change

Time period	LGA	Victoria
1999-2009, actual change	-0.88%	1.51%
2009-2019, projected change	-1.81%	1.28%

Population projections by age group and sex, 2009 and 2026



Copyright - Department of Health
 Modelling, GIS and Planning Products Unit
 spatial@health.vic.gov.au

Services and facilities

	LGA measure	Rank among LGAs	Victoria measure
Primary care partnership	Wimmera PCP	n/a	n/a
Number of kindergartens	3	n/a	1,755
Number of schools	5	n/a	2,260
Persons receiving Disability Services support	2	71	72,298
Aged care places (high care) per 1,000 eligible pop.	50.1	12	41.3
Aged care places (low care) per 1,000 eligible pop.	47.2	42	46.0
Percentage of population near to public transport	9.3%	78	72.6%

Economic, housing and sustainability characteristics

	LGA measure	Rank among LGAs	Victoria measure
Percentage of individuals with income less than \$400 per week	49.9%	28	45.8%
Proportion who are female	57.8%	n/a	62.0%
Proportion who are male	42.2%	n/a	38.0%
Percentage of households with income less than \$650 per week	43.4%	14	30.6%
Percentage of households with housing costs greater than 40% of income	1.7%	79	9.0%
Percentage of rental housing that is affordable	100.0%	1	21.3%
Median house price	\$162,000	69	\$413,446
Median rent for three bedroom home	\$	n/a	n/a
New dwellings approved per 1,000 population	1.5	77	10.3
Social housing as a percentage of total dwellings	0.9%	77	4.3%
Number of social housing dwellings	16	n/a	80,955
Percentage of households with no motor vehicle	5.0%	62	9.3%
Passenger vehicles per 1,000 population	554	60	581
Percentage motor vehicles more than ten years old	57.9%	8	46.2%
Household recycling diversion rate	31.1%	59	39.8%
Household garbage yield (kg/year)	632.4	4	467.8

Health status

	LGA measure	Rank among LGAs	Victoria measure
Male disability-adjusted life years per 1,000 pop.	140.2	54	143.0
Female disability-adjusted life years per 1,000 pop.	120.0	71	129.1
Male life expectancy	76.7	75	80.3
Female life expectancy	85.0	12	84.4
Percentage persons reporting fair or poor health status	16.9%	49	18.3%
Percentage of females reporting fair or poor health status	17.5%	37	17.5%
Percentage of males reporting fair or poor health status	16.9%	54	19.2%
Percentage of persons 18+ who are current smokers	23.2%	15	19.1%
Percentage of females 18+ who are current smokers	24.7%	5	16.9%
Percentage of males 18+ who are current smokers	22.1%	35	21.4%
Percentage of persons at risk of short-term harm from alcohol consumption	12.4%	27	10.2%
Percentage of persons overweight or obese	61.5%	1	48.6%
Percentage of females overweight or obese	52.9%	3	40.3%
Percentage of males overweight or obese	70.5%	4	57.2%
Percentage of persons reporting a high/very high degree of psychological distress	10.7%	42	11.4%
Percentage of persons reporting asthma	12.3%	21	10.7%
Percentage of persons reporting type 2 diabetes	3.5%	59	4.8%
Percentage of persons who do not meet fruit and vegetable dietary guidelines	54.5%	10	48.2%
Percentage of females who do not meet fruit and vegetable dietary guidelines	45.2%	23	41.9%
Percentage of males who do not meet fruit and vegetable dietary guidelines	63.4%	6	54.8%
Percentage of persons who do not meet physical activity guidelines	21.4%	67	27.4%
Percentage of females who do not meet physical activity guidelines	23.4%	60	27.2%
Percentage of males who do not meet physical activity guidelines	20.7%	62	27.5%

Health services and utilisation

	LGA measure	Rank among LGAs	Victoria measure
Hospital inpatient separations per 1,000 population	429.4	36	422.0
Main public hospital attended	Edenhope & District Hospital	n/a	n/a
Separations from most frequently attended public hospital	33.2%	n/a	n/a
Self-sufficiency	36.1%	51	n/a
Average length of stay (multi day stays), public hospital inpatients (days)	6.5	17	5.9
Per annum change in hospital inpatient separations, 1999-2000 to 2009-10	2.7%	51	4.1%
Projected per annum change in separations, 2009-10 to 2018-19	0.1%	78	3.7%
Emergency department presentations per 1,000 pop.	128.3	66	249.9
Primary care type presentation to emergency, per 1,000 population	58.7	59	115.6
General practitioners per 1,000 population	0.76	68	1.03
Asthma admission rate ratio	0.24	79	1.0
Diabetes complications admission rate ratio	1.05	28	1.0
Drug and alcohol clients per 1,000 population	3.7	63	5.3
Registered mental health clients per 1,000 population	13.7	29	11.0
Primary health occasions of service per 1,000 pop.	455.7	17	163.7

Aged and disability characteristics

	LGA measure	Rank among LGAs	Victoria measure
Percentage with core activity need for assistance	5.5%	21	4.5%
Percentage of persons aged 75+ who live alone	3.1%	21	2.2%
Proportion who are female	71.0%	n/a	75.1%
Proportion who are male	29.0%	n/a	24.9%
HACC clients aged 0-69 per 1,000 target population	915.3	3	257.3
HACC clients aged 70 and over per 1,000 target population	503.2	11	368.3

Cultural diversity

	LGA measure	Rank among LGAs	Victoria measure
Percentage born overseas	5.5%	75	25.5%
Percentage speaking language other than English	1.3%	78	21.6%
Percentage with low English proficiency	0.1%	79	4.0%
New settler arrivals per 100,000 population	43.4	73	527.3
Humanitarian arrivals as a percentage of new settlers	0.0%	n/a	12.5%

Social capital

	LGA measure	Rank among LGAs	Victoria measure
Index of Relative Socio-Economic Disadvantage	981.2	31	n/a
Percentage of households with internet connected	48.4%	67	61.0%
Gaming machine losses per head of adult population	n/a	n/a	\$646.6
Family incidents per 1,000 population	5.5	47	6.6
Drug usage and possession offences per 1,000 pop.	0.7	68	1.9
Total offences per 1,000 population	25.7	78	67.2
Percentage who help out as a volunteer	46.6%	1	19.7%
Quality of life index rank	n/a	17	n/a

Education and employment characteristics

	LGA measure	Rank among LGAs	Victoria measure
Unemployment rate	4.2%	60	5.5%
Full-time equivalent students	643	n/a	853,111
Percentage who did not complete year 12	72.1%	10	51.3%
Percentage completed higher education qualification	23.1%	76	43.2%
Percentage of students attending government school	89.1%	2	63.7%

Child and family characteristics

	LGA measure	Rank among LGAs	Victoria measure
Total fertility rate	2.31	9	1.80
Percentage of families headed by one parent	9.4%	79	15.4%
Proportion who are female	56.4%	n/a	60.8%
Proportion who are male	43.6%	n/a	39.2%
Percentage of infants fully breastfed at three months	61.5%	17	51.4%
Percentage of children fully immunised at 24-27 months	90.9%	66	93.0%
Percentage of families with children in households with income less than \$650 per week	23.6%	19	17.9%