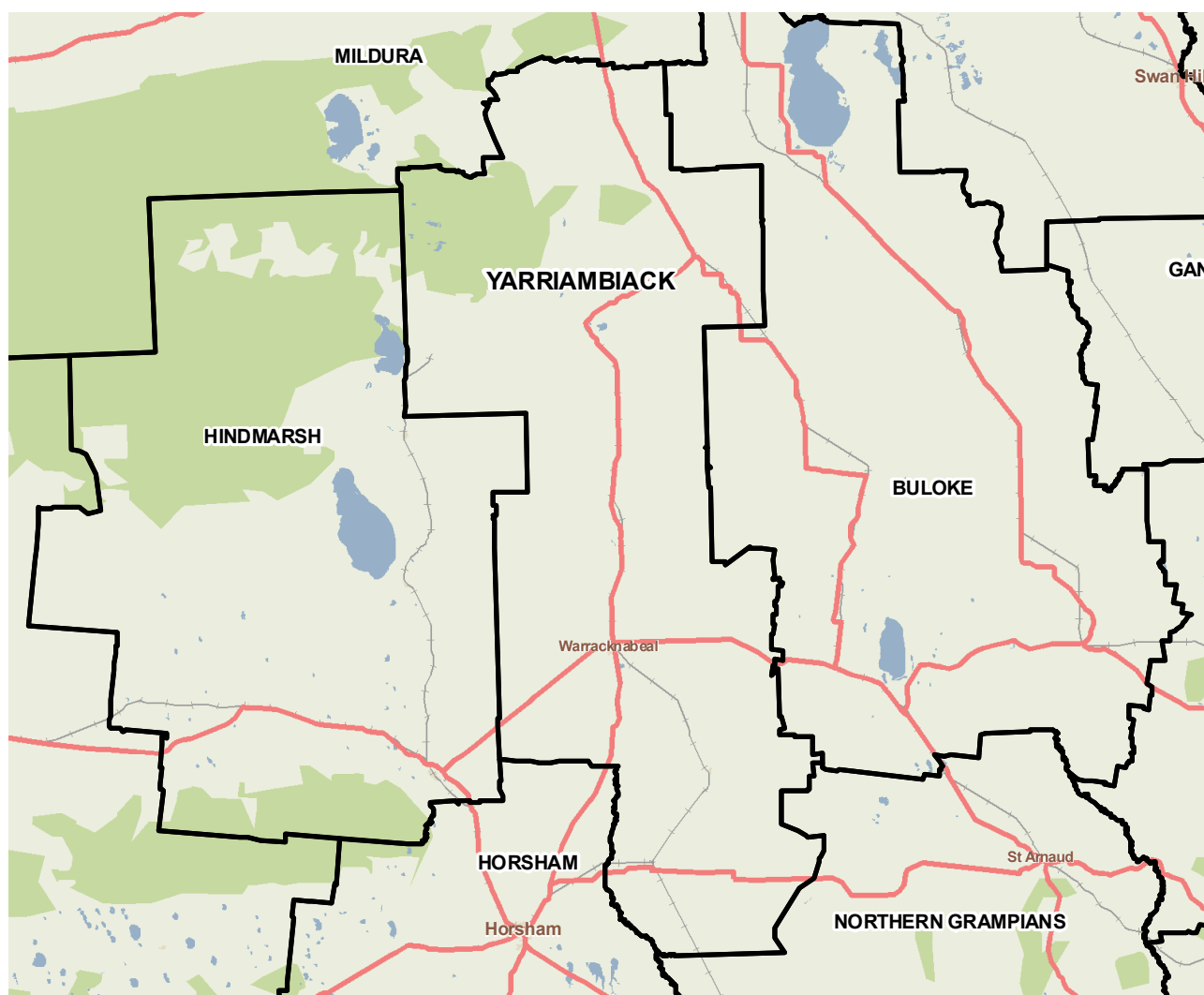


Yarriambiack (S)



The Shire of Yarriambiack is situated in north-western Victoria, in the heart of the state's wheat belt. The population is concentrated in a number of small towns which service the surrounding broadhectare farming properties. Yarriambiack Shire is the heartland of grain production and handling in the Wimmera and Mallee. The three main industries of employment are agriculture, forestry and fishing, health care and social assistance, and retail trade.



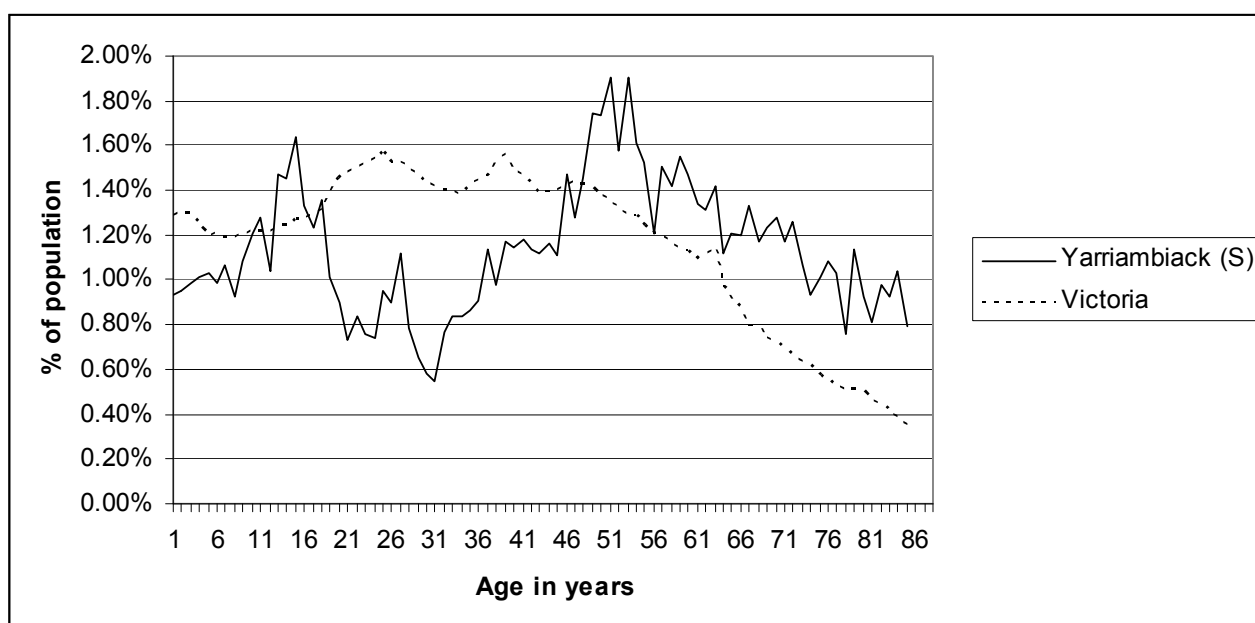
Copyright - Department of Health
Modelling, GIS and Planning Products Unit
spatial@health.vic.gov.au

Geography

Metropolitan/rural	Rural		
Departmental region	Grampians		
Area of LGA	7,310.2 sq km		
ASGC LGA code	27630		
Most populous community in LGA	Warracknabeal		
Distance to Melbourne	331.2 km		
Travel time to Melbourne	256 minutes		
ARIA remoteness category	Moderately Accessible		
ARIA measures (low/median/high)	3.0 / 3.9 / 5.1		
Business land use	<1%	Industrial land use	<1%
Residential land use	2.3%	Rural land use	32.6%
Other land use	64.8%		

Population

2009 population profile



2009 population by age and sex

	Females	Males	Total	% total LGA	% total VIC
0-14	659	653	1,312	17.1%	18.5%
15-24	358	398	756	9.8%	14.3%
25-44	770	683	1,453	18.9%	29.0%
45-64	1,102	1,184	2,286	29.8%	24.6%
65-84	846	777	1,623	21.1%	11.8%
85+	158	93	251	3.3%	1.8%
Total	3,893	3,788	7,681	100.0%	100%

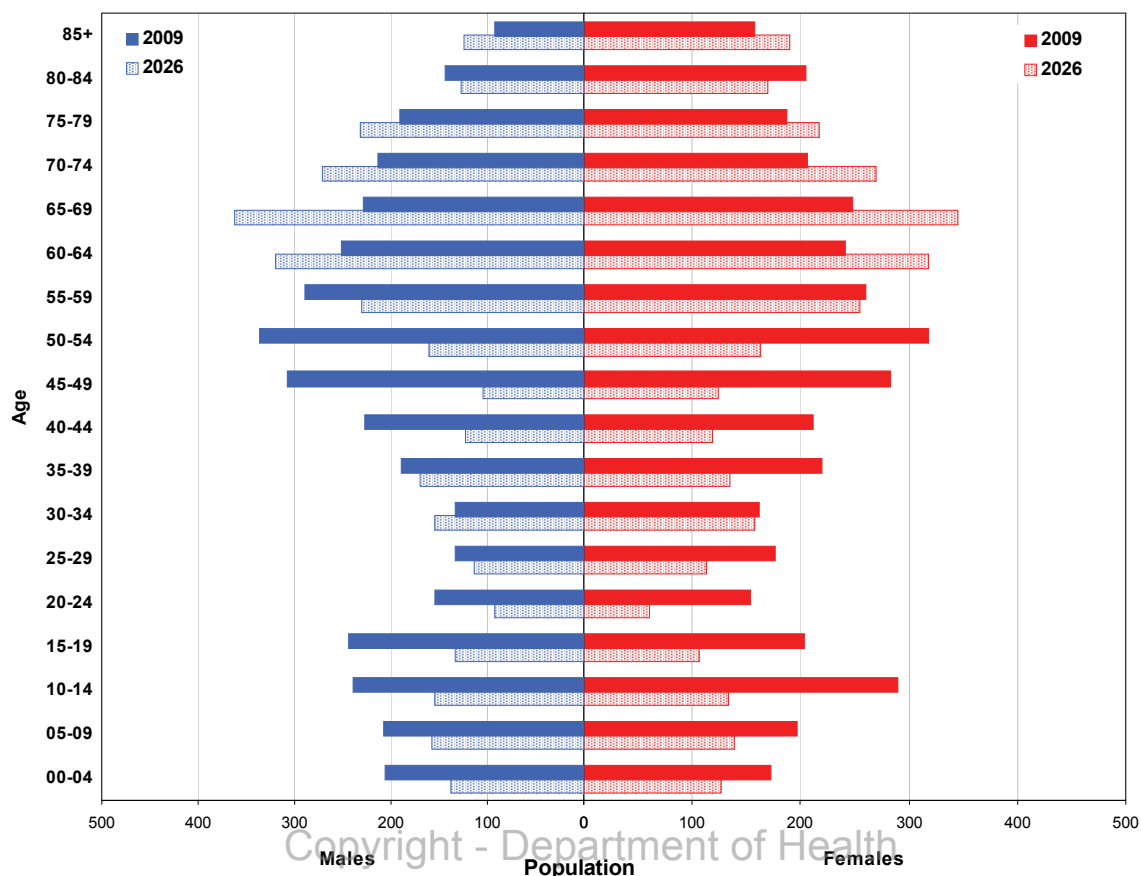
Aboriginal and Torres Strait Islander population

	LGA measure	Rank among LGAs	Victoria measure
Aboriginal and Torres Strait Islander population	0.76%	31	0.65%

Per annum population change

Time period	LGA	Victoria
1999-2009, actual change	-1.11%	1.51%
2009-2019, projected change	-1.29%	1.28%

Population projections by age group and sex, 2009 and 2026



Copyright - Department of Health
 Modelling, GIS and Planning Products Unit
 spatial@health.vic.gov.au

Services and facilities

	LGA measure	Rank among LGAs	Victoria measure
Primary care partnership	Wimmera PCP	n/a	n/a
Number of kindergartens	7	n/a	1,755
Number of schools	15	n/a	2,260
Persons receiving Disability Services support	106	55	72,298
Aged care places (high care) per 1,000 eligible pop.	48.5	17	41.3
Aged care places (low care) per 1,000 eligible pop.	63.7	5	46.0
Percentage of population near to public transport	34.0%	48	72.6%

Economic, housing and sustainability characteristics

	LGA measure	Rank among LGAs	Victoria measure
Percentage of individuals with income less than \$400 per week	56.2%	5	45.8%
Proportion who are female	57.6%	n/a	62.0%
Proportion who are male	42.4%	n/a	38.0%
Percentage of households with income less than \$650 per week	48.6%	6	30.6%
Percentage of households with housing costs greater than 40% of income	2.9%	78	9.0%
Percentage of rental housing that is affordable	100.0%	1	21.3%
Median house price	\$76,500	78	\$413,446
Median rent for three bedroom home	\$140	73	n/a
New dwellings approved per 1,000 population	0.8	78	10.3
Social housing as a percentage of total dwellings	2.3%	64	4.3%
Number of social housing dwellings	68	n/a	80,955
Percentage of households with no motor vehicle	6.7%	45	9.3%
Passenger vehicles per 1,000 population	775	1	581
Percentage motor vehicles more than ten years old	54.0%	26	46.2%
Household recycling diversion rate	25.0%	74	39.8%
Household garbage yield (kg/year)	555.6	17	467.8

Health status

	LGA measure	Rank among LGAs	Victoria measure
Male disability-adjusted life years per 1,000 pop.	147.1	35	143.0
Female disability-adjusted life years per 1,000 pop.	124.5	56	129.1
Male life expectancy	78.1	58	80.3
Female life expectancy	84.8	17	84.4
Percentage persons reporting fair or poor health status	19.3%	25	18.3%
Percentage of females reporting fair or poor health status	16.9%	44	17.5%
Percentage of males reporting fair or poor health status	19.4%	33	19.2%
Percentage of persons 18+ who are current smokers	22.5%	20	19.1%
Percentage of females 18+ who are current smokers	24.6%	6	16.9%
Percentage of males 18+ who are current smokers	16.7%	63	21.4%
Percentage of persons at risk of short-term harm from alcohol consumption	11.1%	43	10.2%
Percentage of persons overweight or obese	58.0%	10	48.6%
Percentage of females overweight or obese	49.3%	14	40.3%
Percentage of males overweight or obese	62.0%	28	57.2%
Percentage of persons reporting a high/very high degree of psychological distress	9.7%	61	11.4%
Percentage of persons reporting asthma	14.3%	7	10.7%
Percentage of persons reporting type 2 diabetes	3.5%	62	4.8%
Percentage of persons who do not meet fruit and vegetable dietary guidelines	50.5%	34	48.2%
Percentage of females who do not meet fruit and vegetable dietary guidelines	33.8%	74	41.9%
Percentage of males who do not meet fruit and vegetable dietary guidelines	60.1%	17	54.8%
Percentage of persons who do not meet physical activity guidelines	21.5%	66	27.4%
Percentage of females who do not meet physical activity guidelines	21.7%	66	27.2%
Percentage of males who do not meet physical activity guidelines	20.4%	65	27.5%

Health services and utilisation

	LGA measure	Rank among LGAs	Victoria measure
Hospital inpatient separations per 1,000 population	451.0	22	422.0
Main public hospital attended	Wimmera Base Hospital [Horsham]	n/a	n/a
Separations from most frequently attended public hospital	45.7%	n/a	n/a
Self-sufficiency	55.9%	26	n/a
Average length of stay (multi day stays), public hospital inpatients (days)	6.0	38	5.9
Per annum change in hospital inpatient separations, 1999-2000 to 2009-10	0.3%	78	4.1%
Projected per annum change in separations, 2009-10 to 2018-19	0.6%	77	3.7%
Emergency department presentations per 1,000 pop.	257.1	29	249.9
Primary care type presentation to emergency, per 1,000 population	122.4	27	115.6
General practitioners per 1,000 population	0.91	49	1.03
Asthma admission rate ratio	1.23	16	1.0
Diabetes complications admission rate ratio	1.10	27	1.0
Drug and alcohol clients per 1,000 population	4.9	43	5.3
Registered mental health clients per 1,000 population	17.2	12	11.0
Primary health occasions of service per 1,000 pop.	1240.8	2	163.7

Aged and disability characteristics

	LGA measure	Rank among LGAs	Victoria measure
Percentage with core activity need for assistance	7.4%	2	4.5%
Percentage of persons aged 75+ who live alone	4.6%	3	2.2%
Proportion who are female	70.1%	n/a	75.1%
Proportion who are male	29.9%	n/a	24.9%
HACC clients aged 0-69 per 1,000 target population	758.3	6	257.3
HACC clients aged 70 and over per 1,000 target population	600.9	5	368.3

Cultural diversity

	LGA measure	Rank among LGAs	Victoria measure
Percentage born overseas	4.9%	78	25.5%
Percentage speaking language other than English	1.7%	74	21.6%
Percentage with low English proficiency	0.2%	72	4.0%
New settler arrivals per 100,000 population	65.1	65	527.3
Humanitarian arrivals as a percentage of new settlers	0.0%	n/a	12.5%

Social capital

	LGA measure	Rank among LGAs	Victoria measure
Index of Relative Socio-Economic Disadvantage	953.3	9	n/a
Percentage of households with internet connected	47.1%	71	61.0%
Gaming machine losses per head of adult population	n/a	n/a	\$646.6
Family incidents per 1,000 population	4.3	62	6.6
Drug usage and possession offences per 1,000 pop.	0.4	77	1.9
Total offences per 1,000 population	42.8	61	67.2
Percentage who help out as a volunteer	45.7%	2	19.7%
Quality of life index rank	n/a	18	n/a

Education and employment characteristics

	LGA measure	Rank among LGAs	Victoria measure
Unemployment rate	6.1%	23	5.5%
Full-time equivalent students	1,188	n/a	853,111
Percentage who did not complete year 12	74.8%	2	51.3%
Percentage completed higher education qualification	24.3%	71	43.2%
Percentage of students attending government school	89.4%	1	63.7%

Child and family characteristics

	LGA measure	Rank among LGAs	Victoria measure
Total fertility rate	2.18	27	1.80
Percentage of families headed by one parent	11.6%	69	15.4%
Proportion who are female	60.3%	n/a	60.8%
Proportion who are male	39.7%	n/a	39.2%
Percentage of infants fully breastfed at three months	66.3%	5	51.4%
Percentage of children fully immunised at 24-27 months	100.0%	1	93.0%
Percentage of families with children in households with income less than \$650 per week	25.1%	14	17.9%